



ADSL 2/2+ VoIP Router

IAD-200, IAD-200W

User's Manual

Copyright

Copyright (C) 2005 PLANET Technology Corp. All rights reserved.

The products and programs described in this User's Manual are licensed products of PLANET Technology, This User's Manual contains proprietary information protected by copyright, and this User's Manual and all accompanying hardware, software, and documentation are copyrighted.

No part of this User's Manual may be copied, photocopied, reproduced, translated, or reduced to any electronic medium or machine-readable form by any means by electronic or mechanical. Including photocopying, recording, or information storage and retrieval systems, for any purpose other than the purchaser's personal use, and without the prior express written permission of PLANET Technology.

Disclaimer

PLANET Technology does not warrant that the hardware will work properly in all environments and applications, and makes no warranty and representation, either implied or expressed, with respect to the quality, performance, merchantability, or fitness for a particular purpose.

PLANET has made every effort to ensure that this User's Manual is accurate; PLANET disclaims liability for any inaccuracies or omissions that may have occurred.

Information in this User's Manual is subject to change without notice and does not represent a commitment on the part of PLANET. PLANET assumes no responsibility for any inaccuracies that may be contained in this User's Manual. PLANET makes no commitment to update or keep current the information in this User's Manual, and reserves the right to make improvements to this User's Manual and/or to the products described in this User's Manual, at any time without notice.

If you find information in this manual that is incorrect, misleading, or incomplete, we would appreciate your comments and suggestions.

FCC Compliance Statement

The device confirmed to comply with the requirements of FCC Part 15 Rule.

Operation is subject to the Following two conditions: (1) This device may not cause harmful interference, and (2) This Device must accept any interference received, including interference that may cause undesired operation.

Federal Communication Commission (FCC) Radiation Exposure Statement

This equipment complies with FCC radiation exposure set forth for an uncontrolled environment. In order to avoid the possibility of exceeding the FCC radio frequency exposure limits, human proximity to the antenna shall not be less than 20 cm (8 inches) during normal operation.

CE mark Warning

This is a class B device. In a domestic environment, this product may cause radio interference, in which case the user may be required to take adequate measures.

WEEE Warning

To avoid the potential effects on the environment and human health as a result of the presence of hazardous substances in electrical and electronic equipment, end users of electrical and electronic equipment should understand the meaning of the crossed-out wheeled bin symbol. Do not dispose of WEEE as unsorted municipal waste and have to collect such WEEE separately.

R&TTE Compliance Statement

This equipment complies with all the requirements of DIRECTIVE 1999/5/EC OF THE EUROPEAN PARLIAMENT AND THE COUNCIL OF 9 March 1999 on radio equipment and telecommunication terminal Equipment and the mutual recognition of their conformity (R&TTE).

The R&TTE Directive repeals and replaces in the directive 98/13/EEC (Telecommunications Terminal Equipment and Satellite Earth Station Equipment) as of April 8, 2000.

Trademarks

The PLANET logo is a trademark of PLANET Technology. This documentation may refer to numerous hardware and software products by their trade names. In most, if not all cases, these designations are claimed as trademarks or registered trademarks by their respective companies.

Safety

This equipment is designed with the utmost care for the safety of those who install and use it. However, special attention must be paid to the dangers of electric shock and static electricity when working with electrical equipment. All guidelines of this and of the computer manufacture must therefore be allowed at all times to ensure the safe use of the equipment.

To avoid struck by lightning, we suggest customers to add a device (lightning protector / surge protector) front of this ADSL 2/2+ VoIP router. Improper installation like without this protection and cause the equipment damaged could void the warranty.

Revision

User's Manual for PLANET ADSL 2/2+ VoIP Router

Model: IAD-200, IAD-200W

Rev: 1.0 (Aug. 2005)

Part No. EM-IAD200Wv1

Table of Contents

CHAPTER 1 INTRODUCTION	1
IAD-200 / IAD-200W Features	1
Package Contents	4
Physical Details	5
CHAPTER 2 INSTALLATION	8
Requirements	8
Procedure	8
CHAPTER 3 SETUP	10
Overview	10
Configuration Program	11
Setup Wizard	12
Home Screen	14
LAN Screen	15
Wireless Screen (IAD-200W only)	17
Wireless Security (IAD-200W only)	20
Trusted Wireless Stations (IAD-200W only)	22
Password Screen	24
CHAPTER 4 PC CONFIGURATION	25
Overview	25
Windows Clients	25
Macintosh Clients	36
Linux Clients	36
Other Unix Systems	36
Wireless Station Configuration (IAD-200W only)	37
Wireless Configuration on Windows XP (IAD-200W only)	37
CHAPTER 5 ADVANCED FEATURES	47
Overview	47
Internet	47
Dynamic DNS (Domain Name Server)	52
Firewall Rules	54
User-defined Services	59
Options	61
Schedule	62
Virtual Servers	64
VoIP	67
CHAPTER 6 ADVANCED ADMINISTRATION	72
Overview	72
PC Database	73
Config File	77
Logs	78
E-mail	80
Diagnostics	82
Remote Administration	83

Routing	85
Upgrade Firmware	89
CHAPTER 7 OPERATION AND STATUS	90
Operation	90
Status Screen	90
Connection Status - PPPoE & PPPoA	94
Connection Details - Dynamic IP Address	95
Connection Details - Fixed IP Address	97
Using VoIP	98
APPENDIX A TROUBLESHOOTING	99
Overview	99
General Problems	99
Internet Access	99
Wireless Access (IAD-200W only)	100
APPENDIX B ABOUT WIRELESS LANS (IAD-200W ONLY)	102
Modes	102
BSS/ESS	102
Channels	103
WEP	103
WPA-PSK	103
Wireless LAN Configuration	104

Chapter 1

Introduction

This Chapter provides an overview of the ADSL 2/2+ VoIP router (IAD-200) / 802.11g ADSL 2/2+ VoIP router's (IAD-200W) features and capabilities.

Congratulations on the purchase of your new ADSL 2/2+ VoIP router – IAD-200 / 802.11g ADSL 2/2+ VoIP router – IAD-200W. The IAD-200 / IAD-200W is a multi-function device providing the following services:

- **ADSL 2/2+ Modem.**
- **Shared Broadband Internet Access** (NAT Router) for all LAN & WLAN users.
- **Wireless Access Point** for 802.11b and 802.11g Wireless Stations. (IAD-200W only)
- **VoIP Gateway** supporting the industry-standard SIP protocol.
- **Ethernet Port** for 10BaseT or 100BaseT connection to your LAN.



Figure 1: 802.11g ADSL 2/2+ VoIP router

IAD-200 / IAD-200W Features

The IAD-200 / IAD-200W incorporates many advanced features, carefully designed to provide sophisticated functions while being easy to use.

Internet Access Features

- **Shared Internet Access.** All users on the LAN or WLAN can access the Internet through the IAD-200 / IAD-200W, using only a single external IP Address. The local (invalid) IP Addresses are hidden from external sources. This process is called NAT (Network Address Translation).
- **Built-in ADSL Modem.** The IAD-200 / IAD-200W has a built-in ADSL modem, supporting all common ADSL connections.
- **IPoA, PPPoE, PPPoA, Direct Connection Support.** The IAD-200 / IAD-200W supports all common connection methods.

-
- ***Auto-detection of Internet Connection Method.*** In most situations, the IAD-200 / IAD-200W can test your ADSL and Internet connection to determine the connection method used by your ISP.
 - ***Fixed or Dynamic IP Address.*** On the Internet (WAN port) connection, the IAD-200 / IAD-200W supports both Dynamic IP Address (IP Address is allocated on connection) and Fixed IP Address.

Advanced Internet Functions

- ***Application Level Gateways (ALGs).*** Applications which use non-standard connections or port numbers are normally blocked by the Firewall. The ability to define and allow such applications is provided, to enable such applications to be used normally.
- ***Special Applications.*** This feature, also called Port Triggering, allows you to use Internet applications which normally do not function when used behind a firewall.
- ***Virtual Servers.*** This feature allows Internet users to access Internet servers on your LAN. The required setup is quick and easy.
- ***Dynamic DNS Support.*** DDNS, when used with the Virtual Servers feature, allows users to connect to Servers on your LAN using a Domain Name, even if you have a dynamic IP address which changes every time you connect.
- ***URL Filter.*** Use the URL Filter to block access to undesirable Web sites by LAN users.
- ***Firewall.*** As well as the built-in firewall to protect your LAN, you can define Firewall Rules to determine which incoming and outgoing traffic should be permitted.
- ***Scheduling.*** Both the URL Filter and Firewall rules can be scheduled to operate only at certain times. This provides great flexibility in controlling Internet-bound traffic.
- ***Logs.*** Define what data is recorded in the Logs, and optionally send log data to a Syslog Server. Log data can also be E-mailed to you.
- ***VPN Pass through Support.*** PCs with VPN (Virtual Private Networking) software using PPTP, L2TP, and IPSec are transparently supported - no configuration is required.

VoIP Features

- ***SIP Standard Compatible.*** The IAD-200 / IAD-200W complies with the SIP standard for VoIP.
- ***Advanced Call features.*** Caller ID, Caller name, Call waiting, three-way conference call, DTMF relay, Voice active detection, Echo canceller.
- ***FAX Support.*** Both the T.38 and G.711 Fax standards are supported, allowing both sending and receiving faxes via the Wireless VoIP Gateway.
- ***Life line (PSTN fallback) Support.*** The PSTN (analogue phone) port is automatically used when the Internet connection is not operational or there is a power failure.

Wireless Features (IAD-200W only)

- ***Standards Compliant.*** The IAD-200W complies with the IEEE802.11g (DSSS) specifications for Wireless LANs.
- ***Supports both 802.11b and 802.11g Wireless Stations.*** The 802.11g standard provides for backward compatibility with the 802.11b standard, so both 802.11b and 802.11g Wireless stations can be used simultaneously.
- ***Speeds up and exceeding 54Mbps.*** All speeds up to the 802.11g maximum of 54Mbps are supported. Also, the IAD-200W support TI's proprietary "g-Plus" solution, which allows even faster speeds between compatible wireless devices.

- **WEP support.** Support for WEP (Wired Equivalent Privacy) is included. Key sizes of 64 Bit and 128 Bit are supported. WEP encrypts any data before transmission, providing protection against snoopers.
- **WPA-PSK support.** Like WEP, WPA-PSK encrypts any data before transmission, providing protection against snoopers. The WPA-PSK is a later standard than WEP, and provides both easier configuration and greater security than WEP.
- **Wireless MAC Access Control.** The Wireless Access Control feature can check the MAC address (hardware address) of Wireless stations to ensure that only trusted Wireless Stations can access your LAN.
- **Simple Configuration.** If the default settings are unsuitable, they can be changed quickly and easily.

LAN Features

- **Ethernet Port.** The IAD-200 / IAD-200W incorporates a 10/100BaseT port for connection to your existing LAN.
- **DHCP Server Support.** Dynamic Host Configuration Protocol provides a dynamic IP address to PCs and other devices upon request. The IAD-200 / IAD-200W can act as a DHCP Server for devices on your local LAN and WLAN.

Configuration & Management

- **Easy Setup.** Use your WEB browser from anywhere on the LAN or WLAN for configuration.
- **Configuration File Upload/Download.** Save (download) the configuration data from the IAD-200 / IAD-200W to your PC, and restore (upload) a previously-saved configuration file to the device.
- **Remote Management.** The IAD-200 / IAD-200W can be managed from any PC on your LAN or Wireless LAN. And, if the Internet connection exists, it can also (optionally) be configured via the Internet.
- **Network Diagnostics.** You can use the IAD-200 / IAD-200W to perform a *Ping* or *DNS lookup*.

Security Features

- **Password - protected Configuration.** Password protection is provided to prevent unauthorized users from modifying the configuration data and settings.
- **Wireless LAN Security.** WPA-PSK, WEP, and Wireless access control by MAC address are all supported. The MAC-level access control feature can be used to prevent unknown wireless stations from accessing your LAN.
- **NAT Protection.** An intrinsic side effect of NAT (Network Address Translation) technology is that by allowing all LAN users to share a single IP address, the location and even the existence of each PC is hidden. From the external viewpoint, there is no network, only a single device - the IAD-200 / IAD-200W.
- **Firewall.** All incoming data packets are monitored and all incoming server requests are filtered, thus protecting your network from malicious attacks from external sources.
- **Protection against DoS attacks.** DoS (Denial of Service) attacks can flood your Internet connection with invalid packets and connection requests, using so much bandwidth and so many resources that Internet access becomes unavailable. The IAD-200 / IAD-200W incorporates protection against DoS attacks.

Package Contents

The following items should be included. If any of these items are damaged or missing, please contact your dealer immediately.

- The IAD-200 / IAD-200W Unit
- 1 Cat-5 Ethernet (LAN) cable
- 1 RJ-11 (ADSL) cable
- Power Adapter
- Quick Installation Guide
- CD-ROM containing the on-line manual.

Physical Details

Front-mounted LEDs

IAD-200



IAD-200W

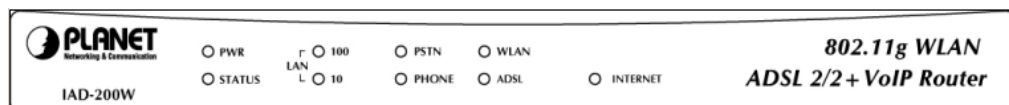


Figure 2: Front Panel

Power LED (Green)	On - Power on. Off - No power.
Status LED (Yellow)	Off - Normal operation. Blinking - This LED blinks during start up, and during a Firmware Upgrade.
LAN	<ul style="list-style-type: none">• 100BT - This will be ON if the LAN connection is using 100BaseT, and Blinking if data is being transferred via the LAN port.• 10BT - This will be ON if the LAN connection is using 10BaseT, and Blinking if data is being transferred via the LAN port. If neither LED is on, there is no active connection on the LAN port.
WLAN LED (IAD-200W only)	On - Wireless enabled. Off - No Wireless connections currently exist. Flashing - Data is being transmitted or received via the Wireless access point. This includes "network traffic" as well as user data.
ADSL	On - ADSL connection established. (This is a low-level connection, it does not mean Internet access is available.) Off - No ADSL connection currently exists. Flashing - Data is being transmitted or received via the ADSL connection.
PSTN	Off - Idle or not connected. Flashing - PSTN line is in use.
Phone	On - Connected to SIP Server. Off - Idle or not connected. Flashing (quickly) - Phone is in use.

Internet

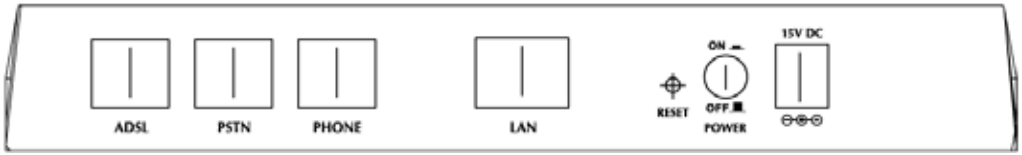
On - Internet connection is available.

Off - No Internet connection available.

Flashing - Data is being transmitted or received.

Rear Panel

IAD-200



IAD-200W

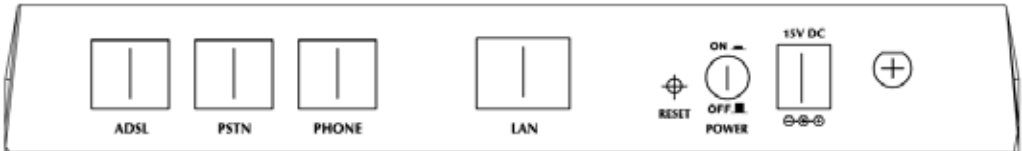


Figure 3: Rear Panel

ADSL port	Connect this port to your ADSL line.
PSTN	Connect this to your PSTN line (normal analog phone line).
Phone	Connect a standard phone here.
LAN	Connect this port to your hub, using the supplied LAN cable.
Reset Button (Reset to Defaults)	This button will reset the IAD-200 / IAD-200W to the factory default settings. To do this, press and hold the Reset Button for five (5) seconds, until the Status LED is lit, then release the Reset Button, and wait the IAD-200 / IAD-200W to restart using the factory default values.
Power switch	Press IN for power ON, OUT for power OFF.
Power port	Connect the supplied power adapter here.

Chapter 2

Installation

2

This Chapter covers the physical installation of the ADSL 2/2+ VoIP router (IAD-200) / 802.11g ADSL 2/2+ VoIP router (IAD-200W).

Requirements

- TCP/IP protocol must be installed on all PCs.
- To use the Wireless Access Point, all Wireless devices must be compliant with the IEEE 802.11g or IEEE 802.11b specifications.
- For Internet Access, an ADSL service and ISP account.
- For VoIP, a SIP account with a VoIP service provider.

Procedure

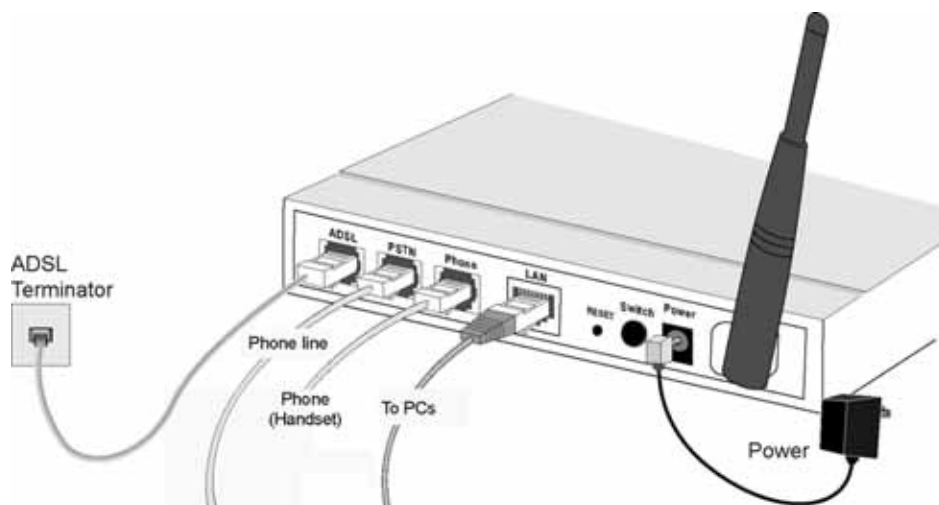


Figure 4: Installation Diagram

1. Choose an Installation Site

Select a suitable place on the network to install the IAD-200 / IAD-200W. Ensure the power is OFF.



For best Wireless reception and performance, the IAD-200W should be positioned in a central location with minimum obstructions between the device and the PCs.

Also, if using multiple Access Points, adjacent Access Points should use different Channels.

2. Connect LAN Cable

Use the supplied LAN cable to connect the **LAN** port on the IAD-200 / IAD-200W to your hub.

3. Connect ADSL Cable

Connect the supplied ADSL cable from the **ADSL** port on the IAD-200 / IAD-200W to the ADSL terminator provided by your phone company.

4. Connect PSTN Line

Connect the PSTN socket on the rear of the IAD-200 / IAD-200W to your normal phone line socket.

5. Connect Phone

Connect a standard phone to the Phone socket on the rear of the IAD-200 / IAD-200W.

6. Power Up

Connect the supplied power adapter to the IAD-200 / IAD-200W. Use only the power adapter provided. Using a different one may cause hardware damage.

Power up by pressing the rear-mounted power switch **IN**, and wait for startup to be completed.

7. Check the LEDs

- The *Power* LED should be ON.
- The *Status* LED should flash, then turn Off. If it stays on, there is a hardware error.
- Either the *100BT* or *10BT* LED should be ON.
- *Phone* LED should be OFF.
- *PSTN* LED will be OFF.
- *WLAN* LED should be ON (IAD-200W only).
- *ADSL* LED should be ON.
- *Internet* LED will be OFF.
It will come ON when configuration is complete and correct, and an Internet connection is established.

For more information, refer to *Front-mounted LEDs* in Chapter 1.

Chapter 3

Setup



This Chapter provides Setup details of the IAD-200 / IAD-200W.

Overview

This chapter describes the setup procedure for:

- Internet Access
- LAN configuration
- Wireless setup
- Assigning a Password to protect the configuration data.

PCs on your local LAN may also require configuration. For details, see *Chapter 4 - PC Configuration*.

Other configuration may also be required, depending on which features and functions of the IAD-200 / IAD-200W you wish to use. Use the table below to locate detailed instructions for the required functions.

To Do this:	Refer to:
Configure PCs on your LAN.	Chapter 4: PC Configuration
Use any of the following Advanced features: <ul style="list-style-type: none">• Internet (DMZ, Special Applications, URL Filter)• Dynamic DNS• Firewall Rules• Firewall Services• Options• Schedule• Virtual Servers• VoIP	Chapter 5: Advanced Features
Use any of the following Administration features: <ul style="list-style-type: none">• PC Database• Config File• Logs• E-mail• Diagnostics• Remote Admin• Routing• Upgrade Firmware	Chapter 6 Advanced Administration
Check IAD-200 / IAD-200W operation and Status.	Chapter 7: Operation and Status

Configuration Program

The IAD-200 / IAD-200W contains an HTTP server. This enables you to connect to it, and configure it, using your Web Browser. **Your Browser must support JavaScript.**

The configuration program has been tested on the following browsers:

- Netscape 7.1 or later.
- Mozilla 1.6 or later
- Internet Explorer V5.5 or later

Preparation

Before attempting to configure the IAD-200 / IAD-200W, please ensure that:

- Your PC can establish a physical connection to the IAD-200 / IAD-200W. The PC and the device must be directly connected (using the Hub ports on the IAD-200 / IAD-200W) or on the same LAN segment.
- The device must be installed and powered ON.
- If the IAD-200 / IAD-200W's default IP Address (192.168.0.1) is already used by another device, the other device must be turned OFF until the device is allocated a new IP Address during configuration.

Using UPnP

If your Windows system supports UPnP, an icon for the IAD-200 / IAD-200W will appear in the system tray, notifying you that a new network device has been found, and offering to create a new desktop shortcut to the newly-discovered device.

- Unless you intend to change the IP Address of the IAD-200 / IAD-200W, you can accept the desktop shortcut.
- Whether you accept the desktop shortcut or not, you can always find UPnP devices in *My Network Places* (previously called *Network Neighborhood*).

Double - click the icon for the IAD-200 / IAD-200W (either on the Desktop, or in *My Network Places*) to start the configuration. Refer to the following section *Setup Wizard* for details of the initial configuration process.

Using your Web Browser

To establish a connection from your PC to the IAD-200 / IAD-200W:

1. After installing the IAD-200 / IAD-200W in your LAN, start your PC. If your PC is already running, restart it.
2. Start your WEB browser.
3. In the *Address* box, enter "HTTP://" and the IP Address of the IAD-200 / IAD-200W, as in this example, which uses the device's default IP Address:
HTTP://192.168.0.1
4. When prompted to login, use the following username and password.
 - User name: admin
 - Password: password

If you cannot connect

If the IAD-200 / IAD-200W does not respond, check the following:

- The IAD-200 / IAD-200W is properly installed, LAN connection is OK, and it is powered ON. You can test the connection by using the "Ping" command:
 - Open the MS-DOS window or command prompt window.
 - Enter the command:
ping 192.168.0.1
If no response is received, either the connection is not working, or your PC's IP address is not compatible with the IAD-200 / IAD-200W's IP Address. (See next item.)
- If your PC is using a fixed IP Address, its IP Address must be within the range 192.168.0.2 to 192.168.0.254 to be compatible with the IAD-200 / IAD-200W's default IP Address of 192.168.0.1. Also, the *Network Mask* must be set to 255.255.255.0. See *Chapter 4 - PC Configuration* for details on checking your PC's TCP/IP settings.
- Ensure that your PC and the IAD-200 / IAD-200W are on the same network segment. (If you don't have a router, this must be the case.)
- Ensure you are using the wired LAN interface. The Wireless interface can only be used if its configuration matches your PC's wireless settings.

Setup Wizard

The first time you connect to the IAD-200 / IAD-200W, you should run the Setup Wizard to configure the IAD-200 / IAD-200W for Internet access.

1. Select **Setup Wizard** on the main menu.
2. Step through the Wizard until finished.
 - You need the data supplied by your ISP. Most connection methods require some data input.
 - The common connection types are explained in the following table.
3. On the final screen of the Wizard, run the test and check that an Internet connection can be established.
4. If the connection test fails:
 - Check all connections, and the front panel LEDs.
 - Check that you have entered all data correctly.

Common Connection Types

Type	Details	ISP Data required
Dynamic IP Address	Your IP Address is allocated automatically, when you connect to you ISP.	<p>a) ADSL parameters (VPI and VCI) may be required, if they cannot be detected automatically.</p> <p>b) Some ISP's may require you to use a particular <i>Hostname</i> or <i>Domain</i> name, or MAC (physical) address.</p>
Static (Fixed) IP Address	Your ISP allocates a permanent IP Address to you. Usually, the connection is "Always on".	<p>a) ADSL parameters (VPI and VCI) may be required, if they cannot be detected automatically.</p> <p>b) IP Address allocated to you, and related information, such as Network Mask, Gateway IP address, and DNS address.</p>
PPPoE, PPPoA	You connect to the ISP only when required. The IP address is usually allocated automatically.	<p>a) ADSL parameters (VPI and VCI) may be required, if they cannot be detected automatically.</p> <p>b) User name and password are always required.</p> <p>c) If using a Static (Fixed) IP address, you need the IP address and related information (Network Mask, Gateway IP address, and DNS address)</p>
IPoA (IP over ATM)	Normally, the connection is "Always on".	<p>a) ADSL parameters (VPI and VCI) may be required, if they cannot be detected automatically.</p> <p>b) IP Address allocated to you, and related information, such as Network Mask, Gateway IP address, and DNS address.</p>

Home Screen

After finishing the Setup Wizard, you will see the *Home* screen. When you connect in future, you will see this screen when you connect. An example screen is shown below.

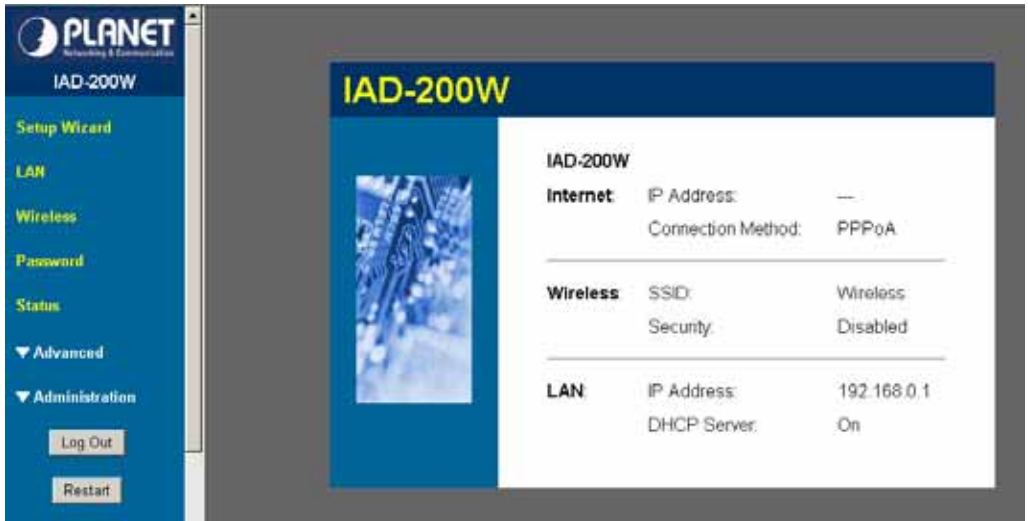


Figure 5: Home Screen

Main Menu

The main menu, on the left, contains links to the most-commonly used screen. To see the links to the other available screens, click "Advanced" or "Administration".

The main menu also contains two (2) buttons:

- **Log Out** - When finished, you should click this button to log out.
- **Restart** - Use this if you wish to restart the IAD-200 / IAD-200W. Note that restarting the Router will break any existing connections to or through the Router.

Navigation & Data Input

- Use the menu bar on the left of the screen, and the "Back" button on your Browser, for navigation.
- Changing to another screen without clicking "Save" does NOT save any changes you may have made. You must "Save" before changing screens or your data will be ignored.



Note!

On each screen, clicking the "Help" button will display help for that screen.

LAN Screen

Use the *LAN* link on the main menu to reach the LAN screen. An example screen is shown below.

LAN

TCP/IP

IP Address: 192 . 168 . 0 . 1

Subnet Mask: 255 . 255 . 255 . 0

DHCP Server

Start IP Address: 192 . 168 . 0 . 2

Finish IP Address: 192 . 168 . 0 . 254

Save Cancel Help

Figure 6: LAN Screen

Data - LAN Screen

TCP/IP	
IP Address	IP address for the IAD-200 / IAD-200W, as seen from the local LAN. Use the default value unless the address is already in use or your LAN is using a different IP address range. In the latter case, enter an unused IP Address from within the range used by your LAN.
Subnet Mask	The default value 255.255.255.0 is standard for small (class "C") networks. For other networks, use the Subnet Mask for the LAN segment to which the IAD-200 / IAD-200W is attached (the same value as the PCs on that LAN segment).
DHCP Server	<ul style="list-style-type: none">• If Enabled, the IAD-200 / IAD-200W will allocate IP Addresses to PCs (DHCP clients) on your LAN when they start up. The default (and recommended) value is Enabled.• If you are already using a DHCP Server, this setting must be Disabled, and the existing DHCP server must be re-configured to treat the IAD-200 / IAD-200W as the default Gateway. See the following section for further details.• The Start IP Address and Finish IP Address fields set the values used by the DHCP server when allocating IP Addresses to DHCP clients. This range also determines the number of DHCP clients supported. See the following section for further details on using DHCP.

DHCP

What DHCP Does

A DHCP (Dynamic Host Configuration Protocol) **Server** allocates a valid IP address to a DHCP **Client** (PC or device) upon request.

- The client request is made when the client device starts up (boots).

-
- The DHCP Server provides the *Gateway* and *DNS* addresses to the client, as well as allocating an IP Address.
 - The IAD-200 / IAD-200W can act as a **DHCP server**.
 - Windows 95/98/ME and other non-Server versions of Windows will act as a DHCP **client**. This is the default Windows setting for the TCP/IP network protocol. However, Windows uses the term *Obtain an IP Address automatically* instead of "DHCP Client".
 - You must NOT have two (2) or more DHCP Servers on the same LAN segment. (If your LAN does not have other Routers, this means there must only be one (1) DHCP Server on your LAN.)

Using the IAD-200 / IAD-200W's DHCP Server

This is the default setting. The DHCP Server settings are on the *LAN* screen. On this screen, you can:

- Enable or Disable the IAD-200 / IAD-200W's *DHCP Server* function.
- Set the range of IP Addresses allocated to PCs by the DHCP Server function.



You can assign Fixed IP Addresses to some devices while using DHCP, provided that the Fixed IP Addresses are NOT within the range used by the DHCP Server.

Using another DHCP Server

You can only use one (1) DHCP Server per LAN segment. If you wish to use another DHCP Server, rather than the IAD-200 / IAD-200W's, the following procedure is required.

- Disable the DHCP Server feature in the IAD-200 / IAD-200W. This setting is on the LAN screen.
- Configure the DHCP Server to provide the IAD-200 / IAD-200W's IP Address as the *Default Gateway*.

To Configure your PCs to use DHCP

This is the default setting for TCP/IP for all non-Server versions of Windows.

See *Chapter 4 - PC Configuration* for the procedure to check these settings.

Wireless Screen (IAD-200W only)

The IAD-200W's settings must match the other Wireless stations.

Note that the IAD-200W will automatically accept both 802.11b and 802.11g connections, and no configuration is required for this feature.

To change the IAD-200W's default settings for the Wireless Access Point feature, use the *Wireless* link on the main menu to reach the *Wireless* screen. An example screen is shown below.

Wireless

Identification

Region: Europe

Station Name: IAD-200W

SSID (Service Set Identifier): Wireless

Options

Mode: 802.11g & 802.11b

Channel No: 03

Broadcast SSID

Wireless Security

Current Setting: Disabled

Configure

Access Point

Enable Wireless Access Point

Allow access by:

ALL Wireless stations

Trusted Wireless stations only

Set Stations

Save Cancel Help

Figure 7: Wireless Screen

Data - Wireless Screen

Identification	
Region	Select the correct domain for your location. It is your responsibility to ensure: <ul style="list-style-type: none">• That the IAD-200W is only used in domains for which is licensed.• That you select the correct domain, so that only the legal channels for that domain can be selected.
Station name	This is the same as the "Device Name" for the IAD-200W.

SSID	<p>This is also called the "Network Name". Enter the desired value. The default value is Wireless.</p> <ul style="list-style-type: none"> • If using an ESS (Extended Service Set, with multiple access points) this ID is called an ESSID (Extended Service Set Identifier). • To communicate, all Wireless stations use the same SSID/ESSID, so must match the value entered here.
Options	
Mode	<p>Select the desired mode:</p> <ul style="list-style-type: none"> • 802.11G-plus (TI) This allows clients to use any of the following modes: <ul style="list-style-type: none"> • Standard 802.11b • 802.11B+ (Texas Instruments proprietary enhanced mode) • Standard 802.11g • 802.11G-plus (Texas Instruments proprietary enhanced mode). This mode can increase throughput by up to 50%, but will only work between compatible TI wireless stations. • 802.11g & 802.11b - Both 802.11.g and 802.11b Wireless stations will be able to use the IAD-200W. • 802.11g only - Only 802.11g Wireless stations can use the IAD-200W. • 802.11b only - Only 802.11b connections are available. 802.11g Wireless Stations will only be able to use the IAD-200W if they are fully backward-compatible with the 802.11b standard.
Channel No.	<p>Select the Channel you wish to use on your Wireless LAN.</p> <ul style="list-style-type: none"> • If you experience interference (shown by lost connections and/or slow data transfers) you may need to experiment with different channels to see which is the best. • If using multiple Access Points, adjacent Access Points should use different Channels to reduce interference.
Broadcast SSID	<p>If enabled, the IAD-200W will broadcast its SSID. This allows PCs and other wireless stations to detect this Access Point and use the correct SSID.</p> <p>If disabled, PC users will have to manually enter the SSID and other details of the wireless interface before they can connect to this Access Point.</p>
Wireless Security	
Current Setting	<p>The current Wireless security is displayed. The default value is Disabled.</p>
Configure Button	<p>Click this button to access the Wireless security sub-screen, and view or change the settings. See the following section for details.</p>
Access Point	
Enable Wireless Access Point	<p>Enable this if you want to use Wireless Access Point function.</p> <p>If disabled, no Wireless stations can use the Access Point function, and all connections must be made via the wired LAN.</p>

Allow access by ...	<p>Use this feature to determine which Wireless stations can use the Access Point. The options are:</p> <ul style="list-style-type: none">• All Wireless Stations - All wireless stations can use the access point, provided they have the correct SSID and security settings.• Trusted Wireless stations only - Only wireless stations you designate as "Trusted" can use the Access Point, even if they have the correct SSID and security settings. <p>This feature uses the MAC address to identify Wireless stations. The MAC address is a low-level network identifier which is unique to each PC or network device.</p> <p>To define the trusted wireless stations, use the "Set Stations" button.</p>
Set Stations Button	<p>Click this button to manage the trusted PC database.</p>

Wireless Security (IAD-200W only)

This screen is accessed by clicking the "Configure" button on the *Wireless* screen. There are 3 options for Wireless security:

- **Disabled** - no data encryption is used.
- **WEP** - data is encrypted using the WEP standard.
- **WPA-PSK** - data is encrypted using the WPA-PSK standard. This is a later standard than WEP, and provides much better security than WEP. If all your Wireless stations support WPA-PSK, you should use WPA-PSK rather than WEP.

WEP Wireless Security

Figure 8: WEP

Data - WEP Screen

WEP Data Encryption	
WEP Data Encryption	<p>Select the desired option, and ensure the Wireless Stations use the same setting.</p> <ul style="list-style-type: none"> • 64 Bit - data is encrypted, using the default key, before being transmitted. You must enter at least the default key. For 64 Bit Encryption, the key size is 10 chars in HEX (0~9 and A~F). • 128 Bit - data is encrypted, using the default key, before being transmitted. You must enter at least the default key. For 128 Bit Encryption, the key size is 26 chars in HEX (0~9 and A~F).
Authentication Type	<p>Normally, this should be left at the default value of "Automatic". If changed to "Open System" or "Shared Key", ensure that your Wireless Stations use the same setting.</p>
Default Key	<p>Select the key you wish to be the default. Transmitted data is ALWAYS encrypted using the Default Key; the other Keys are for decryption only.</p> <p>You must enter a Key Value for the Default Key.</p>

Key Value	Enter the key value or values you wish to use. The Default Key is required, the other keys are optional. Other stations must have the same key.
Passphrase	If desired, you can generate a key from a phrase, instead of entering the key value directly. Enter the desired phrase, and click the "Generate Keys" button.

WPA-PSK Wireless Security

Figure 9: WPA-PSK

Data - WPA-PSK Screen

Security System	WPA-PSK Like WEP, data is encrypted before transmission. WPA is more secure than WEP, and should be used if possible. WPA-PSK is the version of WPA, which does NOT require a Radius Server on your LAN.
PSK	Enter the PSK (network key). Data is encrypted using a key derived from the network key. Other Wireless Stations must use the same network key. The PSK must be from 8 to 63 characters in length.
WPA Encryption	The WPA-PSK standard allows different encryption methods to be used. Select the desired option. Wireless Stations must use the same encryption method.

Trusted Wireless Stations (IAD-200W only)

This feature can be used to prevent unknown Wireless stations from using the Access Point. This list has no effect unless the setting *Allow access by trusted stations only* is enabled.

To change the list of trusted wireless stations, use the *Modify List* button on the *Access Control* screen. You will see a screen like the sample below.

Figure 10: Trusted Wireless Stations

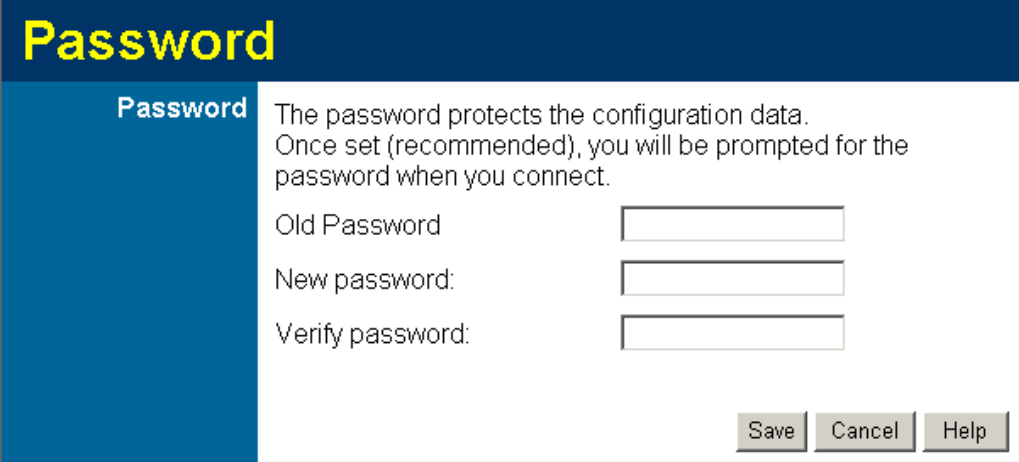
Data - Trusted Wireless Stations

Trusted Wireless Stations	This lists any Wireless Stations which you have designated as "Trusted".
Other Wireless Stations	This list any Wireless Stations detected by the Access Point, which you have not designated as "Trusted".
Name	The name assigned to the Trusted Wireless Station. Use this when adding or editing a Trusted Station.
Address	The MAC (physical) address of the Trusted Wireless Station. Use this when adding or editing a Trusted Station.
Buttons	
<<	Add a Trusted Wireless Station to the list (move from the "Other Stations" list). <ul style="list-style-type: none"> • Select an entry (or entries) in the "Other Stations" list, and click the "<<" button. • Enter the Address (MAC or physical address) of the wireless station, and click the "Add" button.
>>	Delete a Trusted Wireless Station from the list (move to the "Other Stations" list). <ul style="list-style-type: none"> • Select an entry (or entries) in the "Trusted Stations" list. • Click the ">>" button.

Edit	Use this to change an existing entry in the "Trusted Stations" list: <ol style="list-style-type: none">1. Select the Station in the <i>Trusted Station</i> list.2. Click the <i>Edit</i> button. The address will be copied to the "Address" field, and the <i>Add</i> button will change to <i>Update</i>.3. Edit the address (MAC or physical address) as required.4. Click <i>Update</i> to save your changes.
Add (Update)	To add a Trusted Station which is not in the "Other Wireless Stations" list, enter the required data and click this button. When editing an existing Wireless Station, this button will change from <i>Add</i> to <i>Update</i> .
Clear	Clear the <i>Name</i> and <i>Address</i> fields.

Password Screen

The password screen allows you to assign a password to the IAD-200 / IAD-200W.



Password

The password protects the configuration data. Once set (recommended), you will be prompted for the password when you connect.

Old Password

New password:

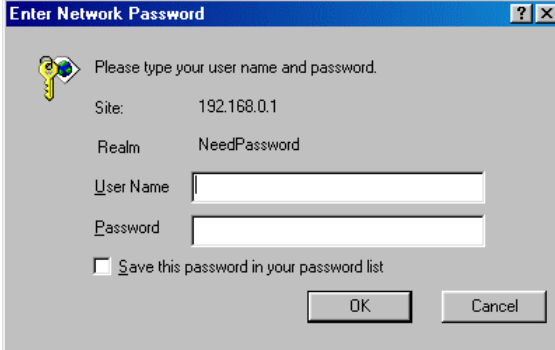
Verify password:

Save Cancel Help

Figure 11: Password Screen

Old Password	Enter the existing password in this field.
New password	Enter the new password here.
Verify password	Re-enter the new password here.

You will be prompted for the password when you connect, as shown below.



Enter Network Password

Please type your user name and password.

Site: 192.168.0.1

Realm: NeedPassword

User Name

Password

Save this password in your password list

OK Cancel

Figure 12: Password Dialog

- The "User Name" is always admin
- Enter the password for the IAD-200 / IAD-200W, as set on the *Password* screen above.

Chapter 4

PC Configuration

This Chapter details the PC Configuration required on the local ("Internal") LAN.

Overview

For each PC, the following may need to be configured:

- TCP/IP network settings
- Internet Access configuration
- Wireless configuration

Windows Clients

This section describes how to configure Windows clients for Internet access via the IAD-200 / IAD-200W.

The first step is to check the PC's TCP/IP settings.

The IAD-200 / IAD-200W uses the TCP/IP network protocol for all functions, so it is essential that the TCP/IP protocol be installed and configured on each PC.

TCP/IP Settings - Overview

If using the default IAD-200 / IAD-200W settings, and the default Windows TCP/IP settings, no changes need to be made.

- By default, the IAD-200 / IAD-200W will act as a DHCP Server, automatically providing a suitable IP Address (and related information) to each PC when the PC boots.
- For all non-Server versions of Windows, the default TCP/IP setting is to act as a DHCP client.

If using a Fixed (specified) IP address, the following changes are required:

- The *Gateway* must be set to the IP address of the Wireless VoIP ADSL Router.
- The *DNS* should be set to the address provided by your ISP.



If your LAN has a Router, the LAN Administrator must re-configure the Router itself. Refer to *Chapter 6 - Advanced Administration* for details.

Checking TCP/IP Settings - Windows 9x/ME:

1. Select *Control Panel - Network*. You should see a screen like the following:

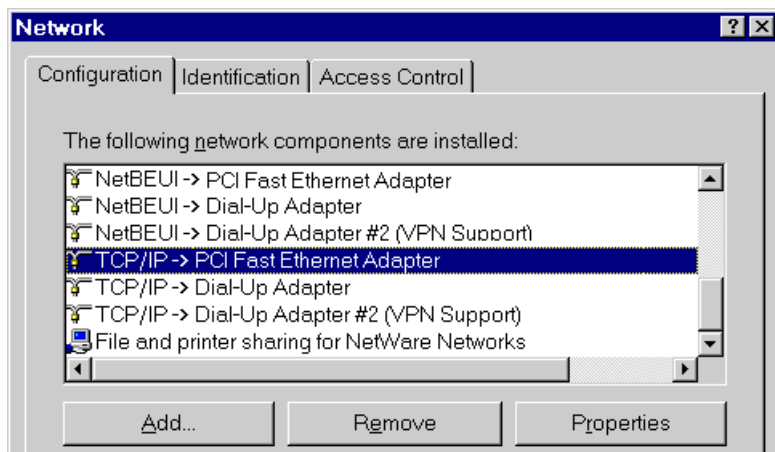


Figure 13: Network Configuration

2. Select the *TCP/IP* protocol for your network card.
3. Click on the *Properties* button. You should then see a screen like the following.

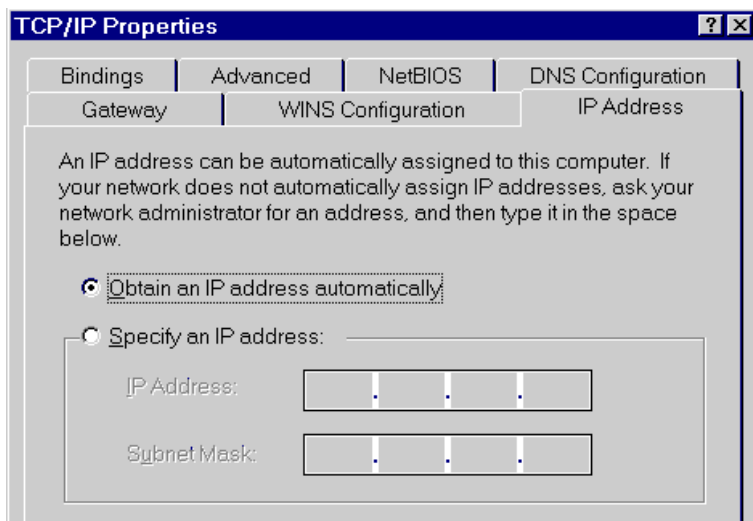


Figure 14: IP Address (Win 95)

Ensure your TCP/IP settings are correct, as follows:

Using DHCP

To use DHCP, select the radio button *Obtain an IP Address automatically*. This is the default Windows setting. **Using this is recommended.** By default, the IAD-200 / IAD-200W will act as a DHCP Server.

Restart your PC to ensure it obtains an IP Address from the IAD-200 / IAD-200W.

Using "Specify an IP Address"

If your PC is already configured, check with your network administrator before making the following changes:

- On the *Gateway* tab, enter the IAD-200 / IAD-200W's IP address in the *New Gateway* field and click *Add*, as shown below. Your LAN administrator can advise you of the IP Address they assigned to the IAD-200 / IAD-200W.

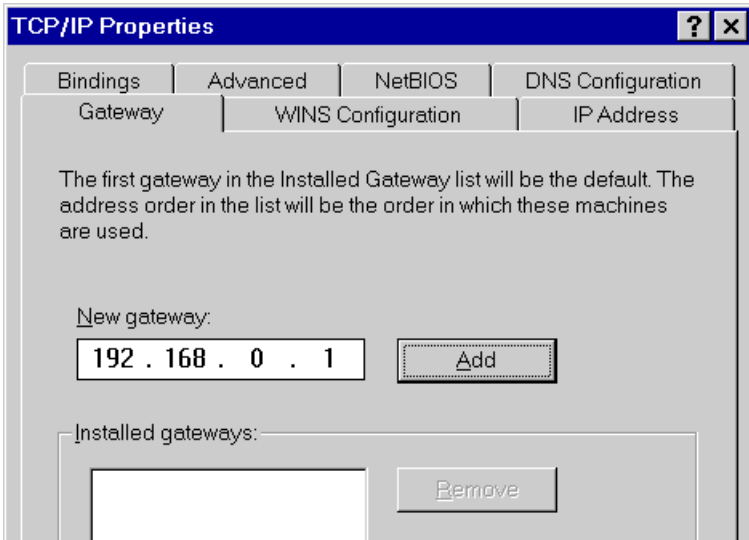


Figure 15: Gateway Tab (Win 95/98)

- On the *DNS Configuration* tab, ensure *Enable DNS* is selected. If the *DNS Server Search Order* list is empty, enter the DNS address provided by your ISP in the fields beside the *Add* button, then click *Add*.

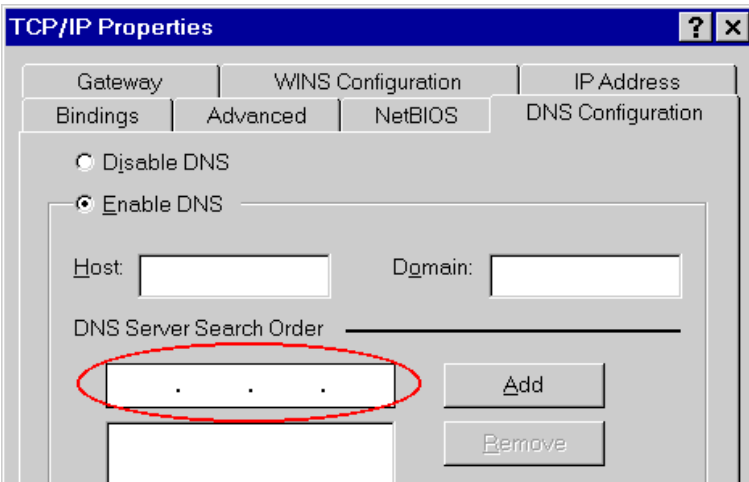


Figure 16: DNS Tab (Win 95/98)

Checking TCP/IP Settings - Windows NT4.0

1. Select *Control Panel - Network*, and, on the *Protocols* tab, select the TCP/IP protocol, as shown below.

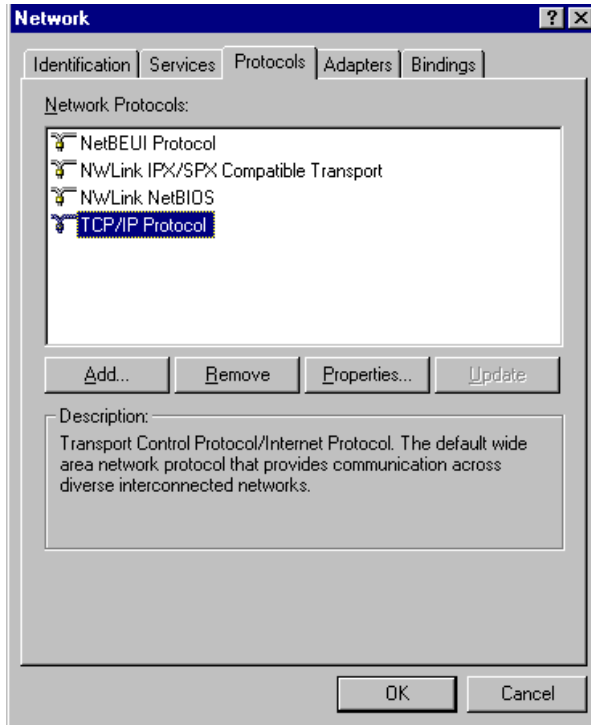


Figure 17: Windows NT4.0 - TCP/IP

2. Click the *Properties* button to see a screen like the one below.

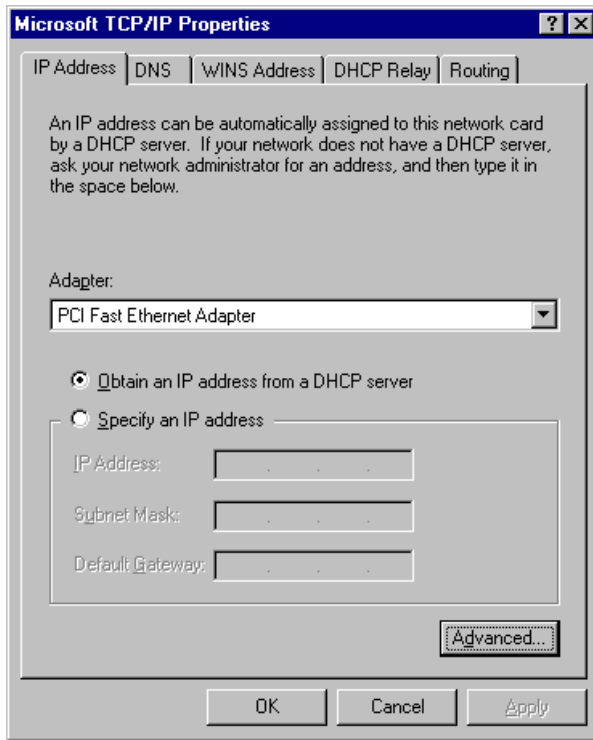


Figure 18: Windows NT4.0 - IP Address

3. Select the network card for your LAN.
4. Select the appropriate radio button - *Obtain an IP address from a DHCP Server* or *Specify an IP Address*, as explained below.

Obtain an IP address from a DHCP Server

This is the default Windows setting. **Using this is recommended.** By default, the IAD-200 / IAD-200W will act as a DHCP Server.

Restart your PC to ensure it obtains an IP Address from the IAD-200 / IAD-200W.

Specify an IP Address

If your PC is already configured, check with your network administrator before making the following changes.

1. The *Default Gateway* must be set to the IP address of the IAD-200 / IAD-200W. To set this:
 - Click the *Advanced* button on the screen above.
 - On the following screen, click the *Add* button in the *Gateways* panel, and enter the IAD-200 / IAD-200W's IP address, as shown in Figure 19 below.
 - If necessary, use the *Up* button to make the IAD-200 / IAD-200W the first entry in the *Gateways* list.

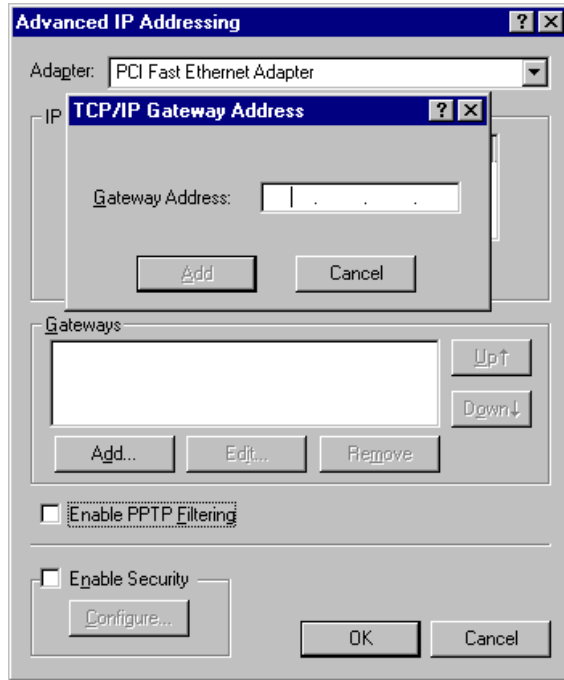


Figure 19 - Windows NT4.0 - Add Gateway

2. The DNS should be set to the address provided by your ISP, as follows:
 - Click the DNS tab.
 - On the DNS screen, shown below, click the *Add* button (under *DNS Service Search Order*), and enter the DNS provided by your ISP.

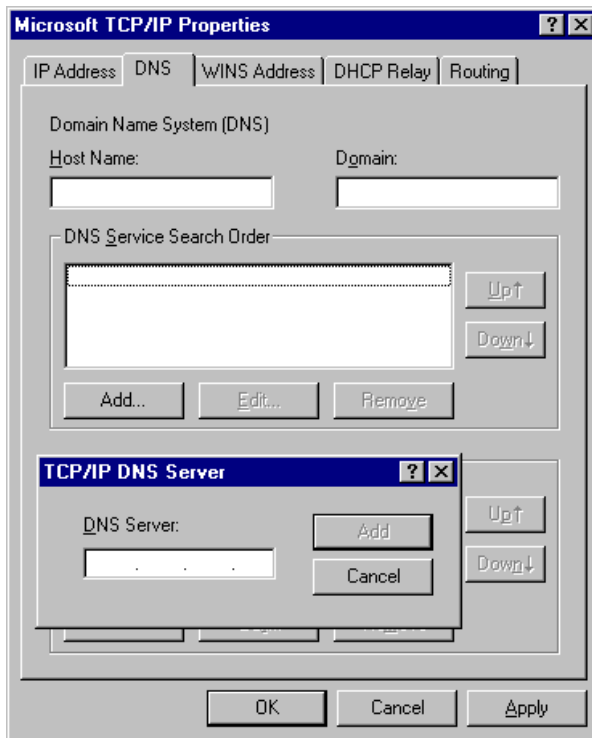


Figure 20: Windows NT4.0 - DNS

Checking TCP/IP Settings - Windows 2000:

1. Select *Control Panel - Network and Dial-up Connection*.
2. Right - click the *Local Area Connection* icon and select *Properties*. You should see a screen like the following:

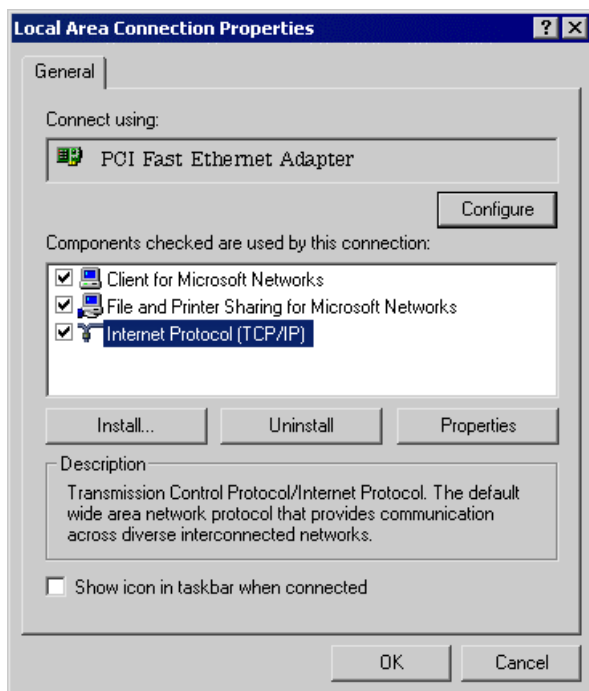


Figure 21: Network Configuration (Win 2000)

3. Select the *TCP/IP* protocol for your network card.
4. Click on the *Properties* button. You should then see a screen like the following.

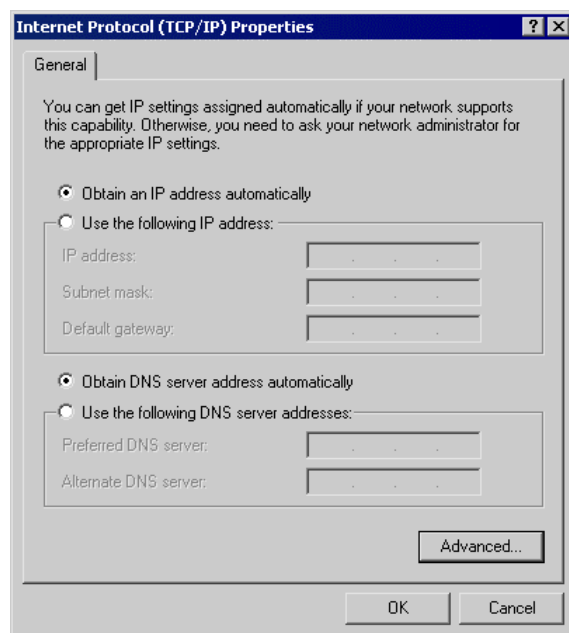


Figure 22: TCP/IP Properties (Win 2000)

5. Ensure your TCP/IP settings are correct, as described below.

Using DHCP

To use DHCP, select the radio button *Obtain an IP Address automatically*. This is the default Windows setting. **Using this is recommended.** By default, the IAD-200 / IAD-200W will act as a DHCP Server.

Restart your PC to ensure it obtains an IP Address from the IAD-200 / IAD-200W.

Using a fixed IP Address ("Use the following IP Address")

If your PC is already configured, check with your network administrator before making the following changes.

- Enter the IAD-200 / IAD-200W's IP address in the *Default gateway* field and click *OK*. (Your LAN administrator can advise you of the IP Address they assigned to the IAD-200 / IAD-200W.)
- If the *DNS Server* fields are empty, select *Use the following DNS server addresses*, and enter the DNS address or addresses provided by your ISP, then click *OK*.

Checking TCP/IP Settings - Windows XP

1. Select *Control Panel - Network Connection*.
2. Right click the *Local Area Connection* and choose *Properties*. You should see a screen like the following:

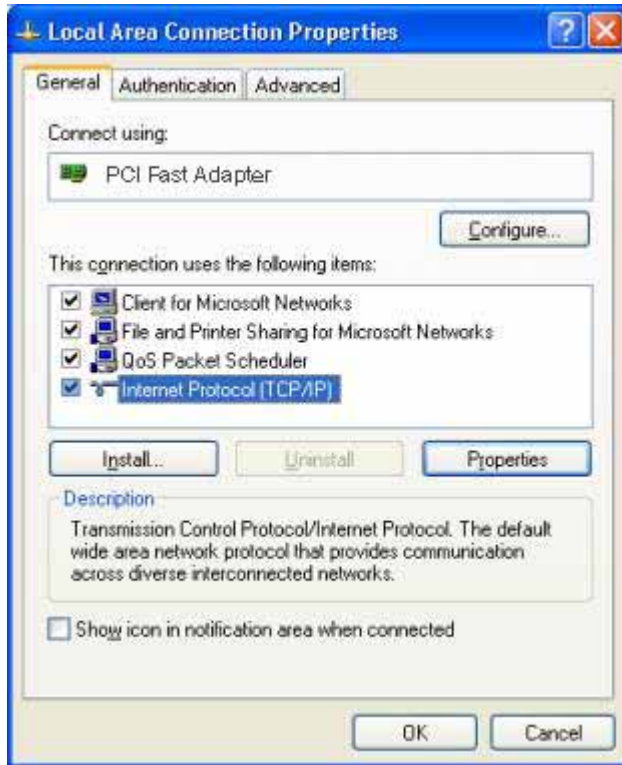


Figure 23: Network Configuration (Windows XP)

3. Select the *TCP/IP* protocol for your network card.
4. Click on the *Properties* button. You should then see a screen like the following.

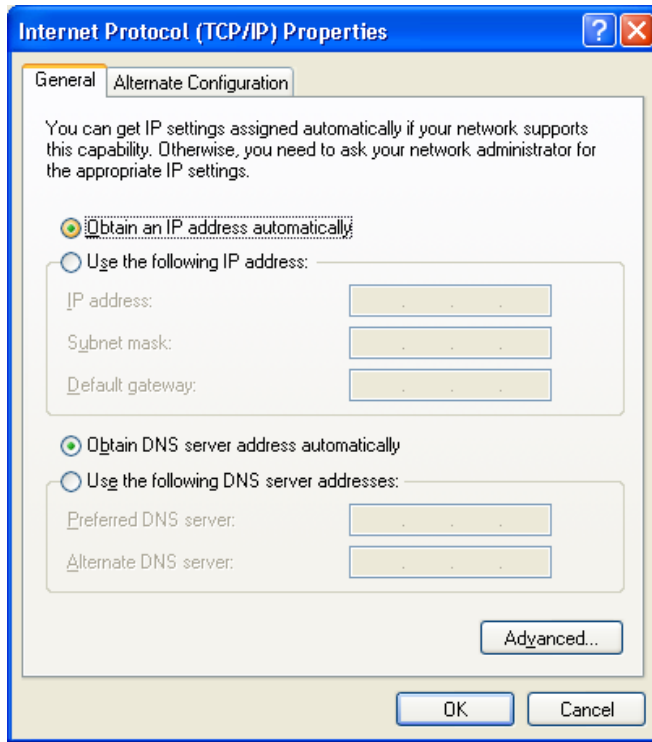


Figure 24: TCP/IP Properties (Windows XP)

5. Ensure your TCP/IP settings are correct.

Using DHCP

To use DHCP, select the radio button *Obtain an IP Address automatically*. This is the default Windows setting. **Using this is recommended.** By default, the IAD-200 / IAD-200W will act as a DHCP Server.

Restart your PC to ensure it obtains an IP Address from the IAD-200 / IAD-200W.

Using a fixed IP Address ("Use the following IP Address")

If your PC is already configured, check with your network administrator before making the following changes.

- In the *Default gateway* field, enter the IAD-200 / IAD-200W's IP address and click *OK*. Your LAN administrator can advise you of the IP Address they assigned to the IAD-200 / IAD-200W.
- If the *DNS Server* fields are empty, select *Use the following DNS server addresses*, and enter the DNS address or addresses provided by your ISP, then click *OK*.

Internet Access

To configure your PCs to use the IAD-200 / IAD-200W for Internet access:

- Ensure that the Internet connection is functional.
- Use the following procedure to configure your Browser to access the Internet via the LAN, rather than by a Dial-up connection.

For Windows 9x/ME/2000

1. Select *Start Menu - Settings - Control Panel - Internet Options*.
2. Select the *Connection* tab, and click the *Setup* button.
3. Select "I want to set up my Internet connection manually, or I want to connect through a local area network (LAN)" and click *Next*.
4. Select "I connect through a local area network (LAN)" and click *Next*.
5. Ensure all of the boxes on the following Local area network Internet Configuration screen are **unchecked**.
6. Check the "No" option when prompted "Do you want to set up an Internet mail account now?"
7. Click *Finish* to close the Internet Connection Wizard.
Setup is now completed.

For Windows XP

1. Select *Start Menu - Control Panel - Network and Internet Connections*.
2. Select *Set up or change your Internet Connection*.
3. Select the *Connection* tab, and click the *Setup* button.
4. Cancel the pop-up "Location Information" screen.
5. Click *Next* on the "New Connection Wizard" screen.
6. Select "Connect to the Internet" and click *Next*.
7. Select "Set up my connection manually" and click *Next*.
8. Check "Connect using a broadband connection that is always on" and click *Next*.
9. Click *Finish* to close the New Connection Wizard.
Setup is now completed.

Accessing AOL

To access AOL (America On Line) through the IAD-200 / IAD-200W, the *AOL for Windows* software must be configured to use TCP/IP network access, rather than a dial-up connection.

The configuration process is as follows:

- Start the *AOL for Windows* communication software. Ensure that it is Version 2.5, 3.0 or later. This procedure will not work with earlier versions.
- Click the *Setup* button.
- Select *Create Location*, and change the location name from "New Locality" to "IAD-200 / IAD-200W".
- Click *Edit Location*. Select *TCP/IP* for the *Network* field. (Leave the *Phone Number* blank.)
- Click *Save*, then *OK*.
Configuration is now complete.
- Before clicking "Sign On", always ensure that you are using the "IAD-200 / IAD-200W" location.

Macintosh Clients

From your Macintosh, you can access the Internet via the IAD-200 / IAD-200W. The procedure is as follows.

1. Open the TCP/IP Control Panel.
2. Select *Ethernet* from the *Connect via* pop-up menu.
3. Select *Using DHCP Server* from the *Configure* pop-up menu. The DHCP Client ID field can be left blank.
4. Close the TCP/IP panel, saving your settings.

Note:

If using manually assigned IP addresses instead of DHCP, the required changes are:

- Set the *Router Address* field to the IAD-200 / IAD-200W's IP Address.
- Ensure your DNS settings are correct.

Linux Clients

To access the Internet via the IAD-200 / IAD-200W, it is only necessary to set the IAD-200 / IAD-200W as the "Gateway".

Ensure you are logged in as "root" before attempting any changes.

Fixed IP Address

By default, most Unix installations use a fixed IP Address. If you wish to continue using a fixed IP Address, make the following changes to your configuration.

- Set your "Default Gateway" to the IP Address of the IAD-200 / IAD-200W.
- Ensure your DNS (Name server) settings are correct.

To act as a DHCP Client (recommended)

The procedure below may vary according to your version of Linux and X -windows shell.

1. Start your X Windows client.
2. Select *Control Panel - Network*
3. Select the "Interface" entry for your Network card. Normally, this will be called "eth0".
4. Click the *Edit* button, set the "protocol" to "DHCP", and save this data.
5. To apply your changes
 - Use the "Deactivate" and "Activate" buttons, if available.
 - OR, restart your system.

Other Unix Systems

To access the Internet via the IAD-200 / IAD-200W:

- Ensure the "Gateway" field for your network card is set to the IP Address of the IAD-200 / IAD-200W.
- Ensure your DNS (Name Server) settings are correct.

Wireless Station Configuration (IAD-200W only)

This section applies to all Wireless stations wishing to use the IAD-200W's Access Point, regardless of the operating system which is used on the client.

To use the Wireless Access Point in the IAD-200W, each Wireless Station must have compatible settings, as follows:

Mode	The mode must be set to <i>Infrastructure</i> (rather than Ad-hoc) Access points only operate in <i>Infrastructure</i> mode.
SSID (ESSID)	This must match the value used on the IAD-200W. The default value is Wireless . Note! The SSID is case sensitive.
Wireless Security	By default, Wireless security on the IAD-200W is disabled. <ul style="list-style-type: none"> If Wireless security remains disabled on the IAD-200W, all stations must have wireless security disabled. If Wireless security is enabled on the Wireless VoIP Gateway (either WEP or WPA-PSK), each station must use the same settings as the Wireless ADLS VoIP Gateway.

Wireless Configuration on Windows XP (IAD-200W only)

If using Windows XP to configure the Wireless interface on your PC, the configuration procedure is as follows:

1. Open the Network Connections folder. (*Start - Settings - Network Connections*).

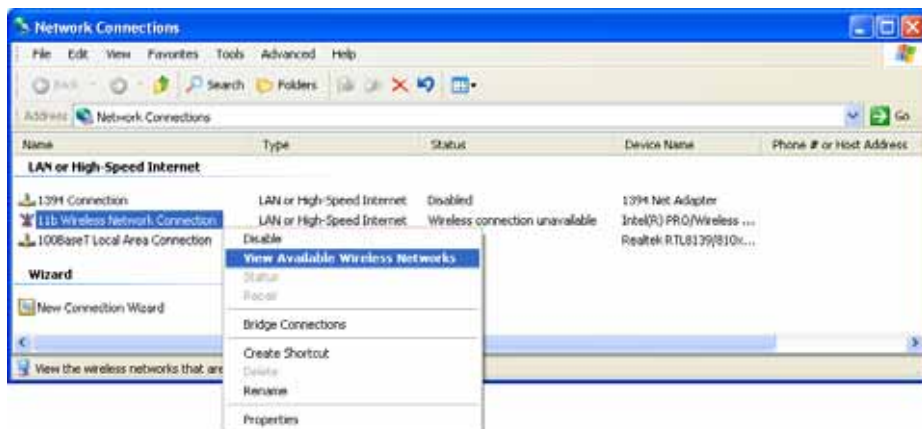


Figure 25: Network Connections (Windows XP)

2. Right-click the Wireless Network Connection, check that it is enabled (menu option says *Disable*, rather than *Enable*) and then select *View Available Wireless Networks*.
3. You will then see a list of wireless networks.

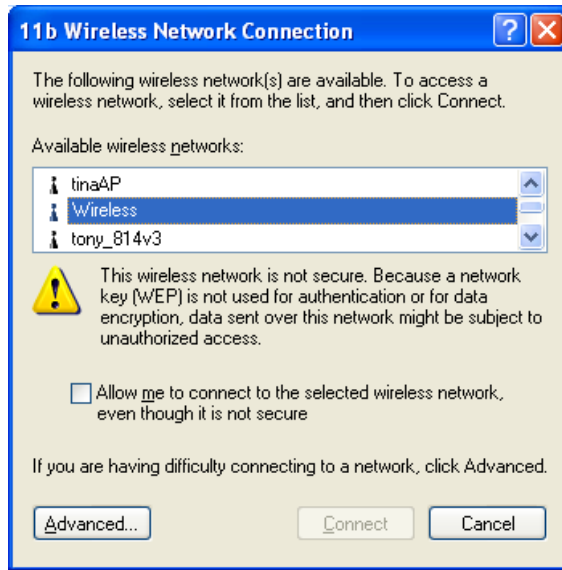


Figure 26 Wireless Networks (Windows XP)



Note!

If the "Broadcast SSID" setting on the IAD-200W has been disabled, its SSID will NOT be listed. See the following section "If the SSID is not listed" for details of dealing with this situation.

4. The next step depends on whether or not Wireless security has been enabled on the IAD-200W.

If Wireless Security is Disabled

If Wireless security on the IAD-200W is disabled, Windows will warn you that the Wireless network is not secure.

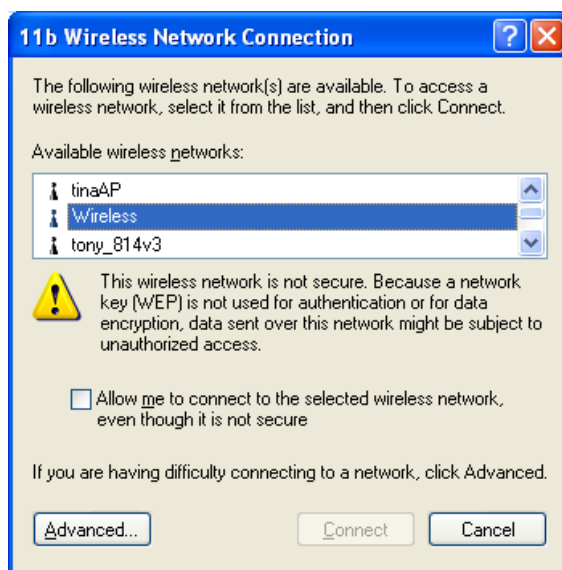


Figure 27 Insecure Wireless Network (Windows XP)

To connect:

- Check the checkbox *Allow me to connect to the selected wireless network, even though it is not secure*.
- The *Connect* button will then be available. Click the *Connect* button, and wait a few seconds for the connection to be established.

If using WEP Data Encryption

If WEP data encryption has been enabled on the IAD-200W, Windows will detect this, and show a screen like the following.

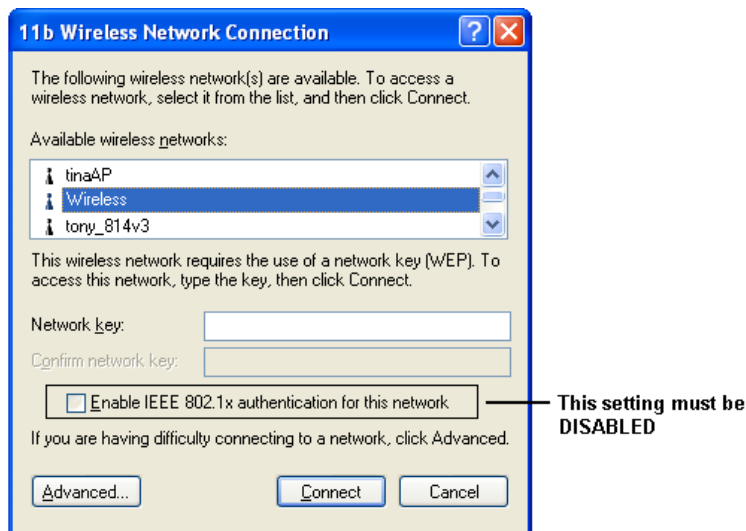


Figure 28: WEP (Windows XP)

To connect:

- Enter the WEP key, as set on the IAD-200W, in the *Network Key* field.
- Re-enter the WEP key into the *Confirm Network key* field.
- **Disable** the checkbox *Enable IEEE 802.1x authentication for this network*.
- Click the *Connect* button.

If this fails, click the *Advanced* button, to see a screen like the following:

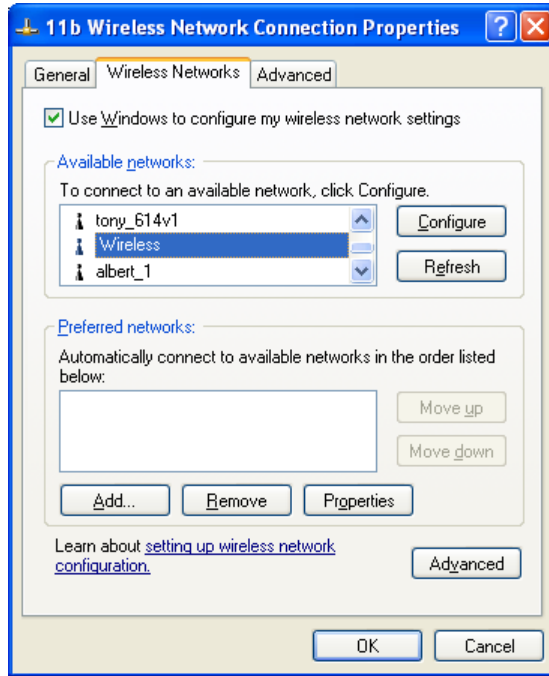


Figure 29: Advanced - Wireless Networks

Select the SSID for the IAD-200W, and click *Configure*, to see a screen like the following:

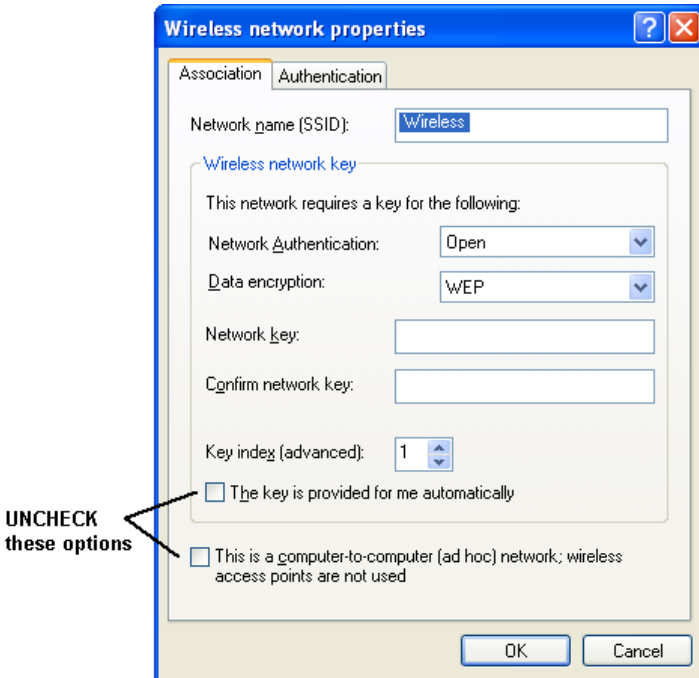


Figure 30: Wireless Network Properties - WEP

Configure this screen as follows:

- Set *Network Authentication* to match the IAD-200W. (If the setting on the IAD-200W is "Auto", then either *Open* or *Shared* can be used.)
- For *Data Encryption*, select **WEP**.

- For the *Network key* and *Confirm network key*, enter the **default key value** used on the IAD-200W. (Windows will determine if 64bit or 128bit encryption is used.)
- The *Key index* must match the **default key index** on the IAD-200W. The default value is 1.
- Ensure the options. *The key is provided for me automatically* and *this is a computer-to-computer (ad hoc) network* are unchecked.
- Click OK to save and close this dialog.
- This wireless network will now be listed in *Preferred Networks* on the screen below.

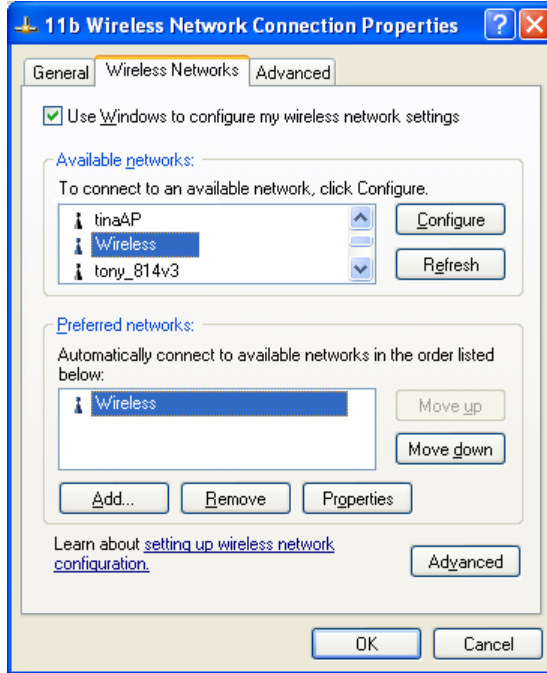


Figure 31: Preferred Networks

Click OK to establish a connection to the IAD-200W.

If using WPA-PSK Data Encryption (IAD-200W only)

If WPA-PSK data encryption has been enabled on the IAD-200W, it does not matter which network is selected on the screen below. Just click the *Advanced* button.

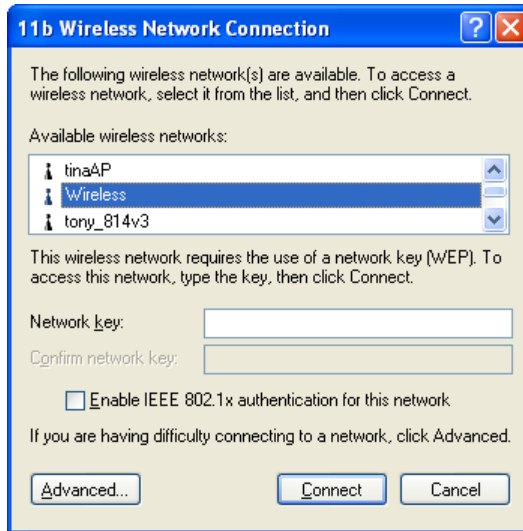


Figure 32: Wireless Networks (Windows XP)

You will then see a screen like the example below.

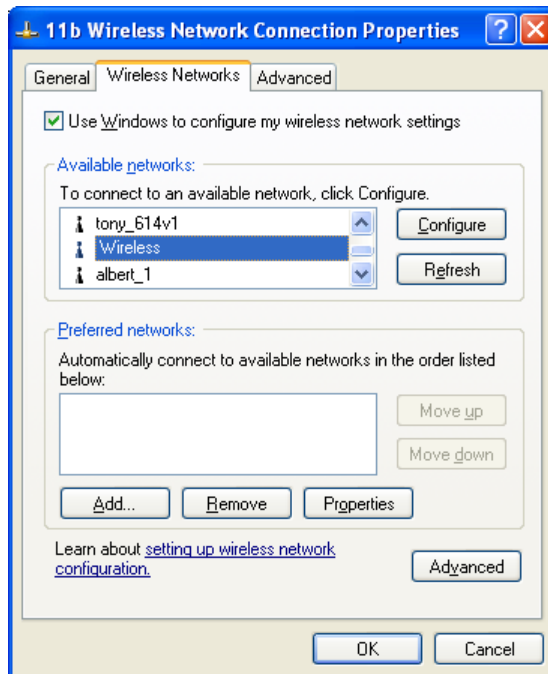


Figure 33: Advanced - Wireless Networks

Select the SSID for the IAD-200W, and click *Configure*, to see a screen like the following:

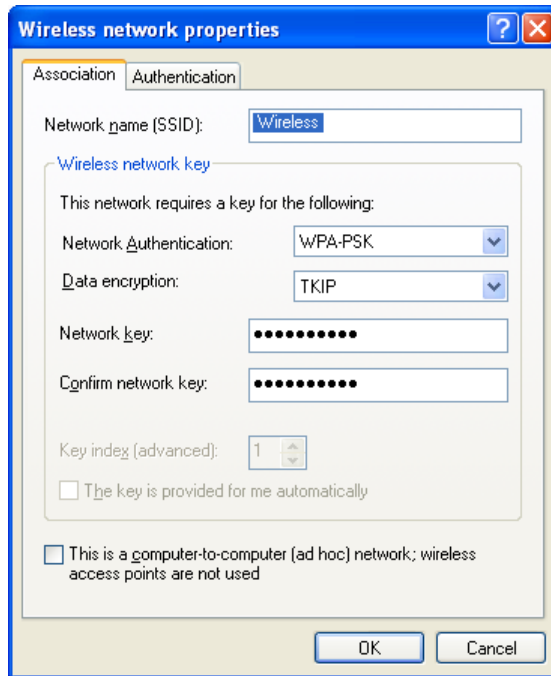


Figure 34: Wireless Network Properties- WPA-PSK

Configure this screen as follows:

- Set *Network Authentication* to **WPA-PSK**.
- For *Data Encryption*, select **TKIP**.
- For the *Network key* and *Confirm network key*, enter the network key (PSK) used on the IAD-200W.
- Ensure the option. *This is a computer-to-computer (ad hoc) network* is unchecked.
- Click OK to save and close this dialog.
- This wireless network will now be listed in *Preferred Networks* on the screen below.

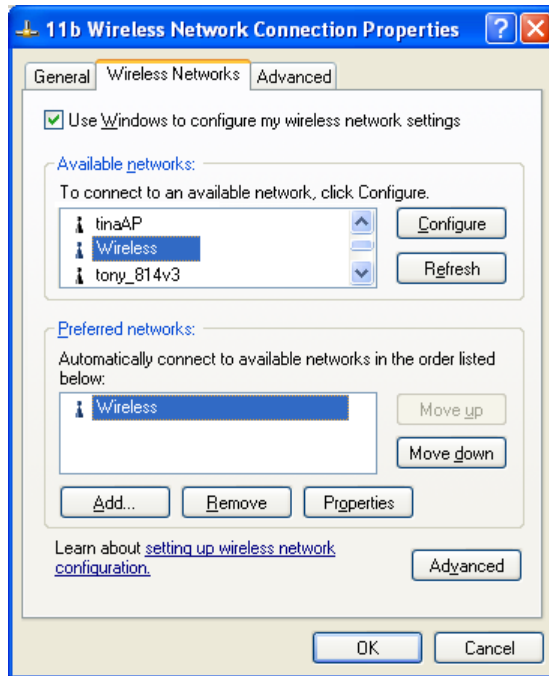


Figure 35: Preferred Networks

Click OK to establish a connection to the IAD-200W.

If the SSID is not listed (IAD-200W only)

If the "Broadcast SSID" setting on the IAD-200W has been disabled, its SSID will NOT be listed on the screen below.

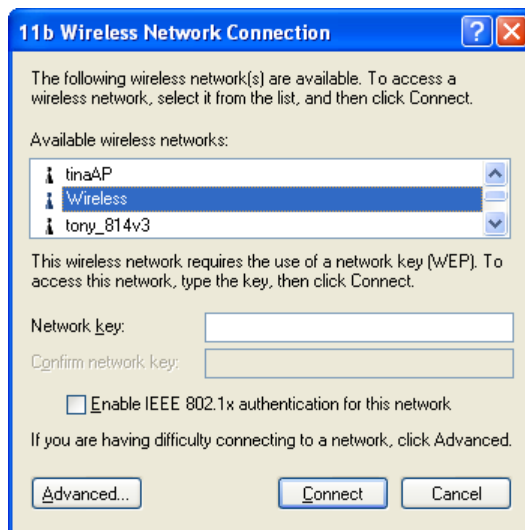


Figure 36: Wireless Networks (Windows XP)

In this situation, you need to obtain the SSID from your network administrator, and then follow this procedure:

1. Click the *Advanced* button to see a screen like the example below.

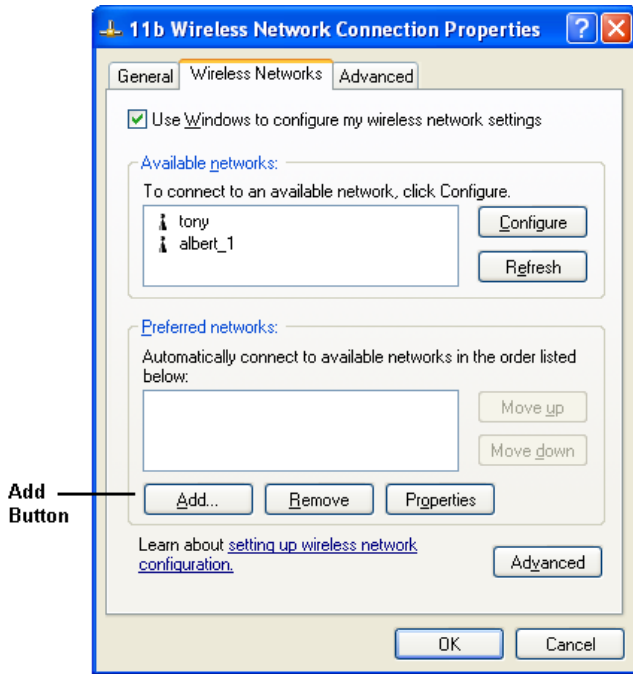


Figure 37: Unlisted Wireless Network

2. Click the *Add* button. You will see a screen like the example below.

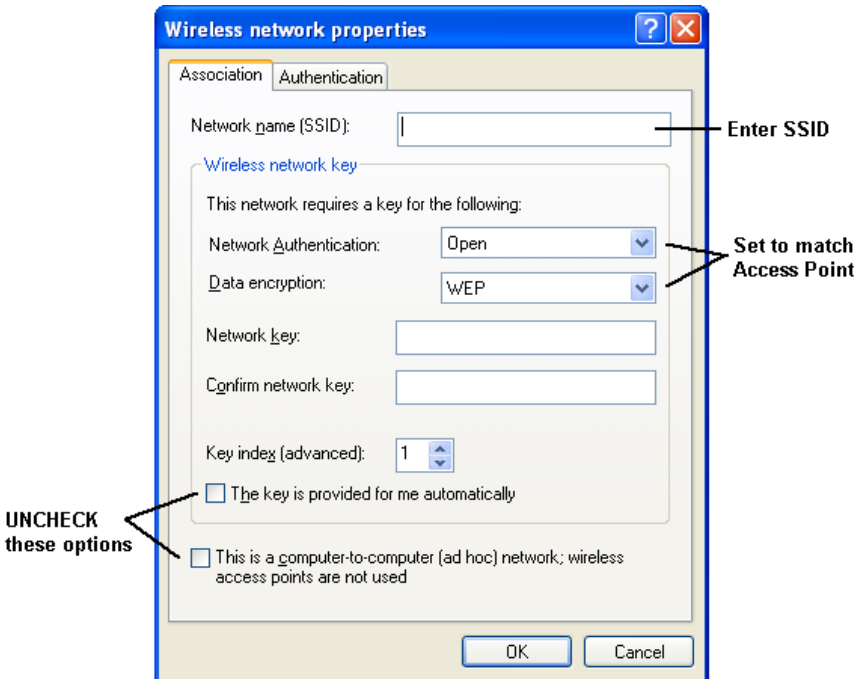


Figure 38: Add Wireless Network

3. Configure this screen as follows:
 - Enter the correct SSID, as used on the IAD-200W. Remember the SSID is case-sensitive, so be sure to match the case, not just the spelling.
 - Set *Network Authentication* and *Data Encryption* to match the IAD-200W.

- If using data encryption (WEP or WPA-PSK), enter the key used on the IAD-200W. See the preceding sections for details of WEP and WPA-PSK.
 - Uncheck the options. *The key is provided for me automatically and this is a computer-to-computer (ad hoc) network.*
 - Click OK to save and exit.
4. This wireless network will then be listed in *Preferred Networks* on the screen below.

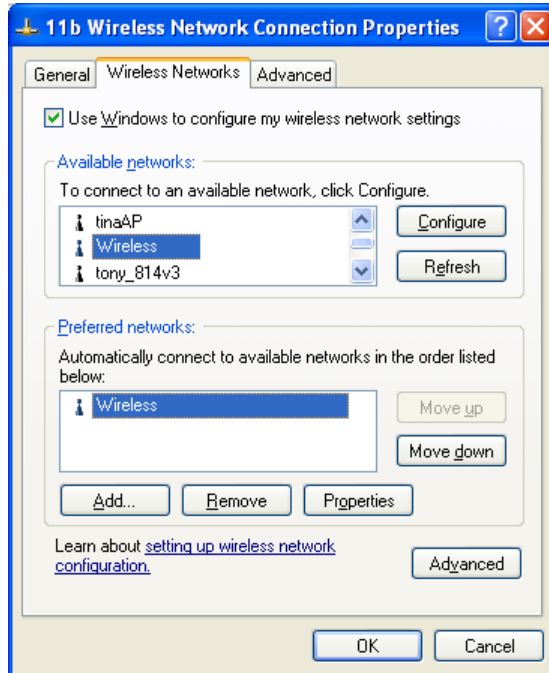


Figure 39: Preferred Networks

5. Click OK to establish a connection to the IAD-200W.

Chapter 5

Advanced Features



This Chapter explains when and how to use the IAD-200 / IAD-200W's "Advanced" Features.

Overview

The following advanced features are provided:

- Internet:
 - DMZ
 - Special Applications
 - URL filter
- Dynamic DNS
- Firewall Rules
- Firewall Services
- Options
- Schedule
- Virtual Servers
- VoIP

Internet

This screen provides access to the DMZ, Special Applications and URL Filter features.

The screenshot shows the 'Internet' configuration page. On the left is a blue sidebar with three sections: 'DMZ', 'Special Applications', and 'URL Filter'. The main content area is white and contains the following elements:

- DMZ:** A checkbox labeled 'Enable DMZ, using' followed by a dropdown menu showing 'Select a PC'. Below this is a blue link that says 'My PC is not listed'.
- Special Applications:** A text block stating 'If an application does not work, you can define it as a Special Application.' Below this text is a button labeled 'Special Applications'.
- URL Filter:** Three radio button options: 'Disable', 'Block Always' (which is selected), and 'Block By Schedule'. Below these options is a button labeled 'Configure URL Filter'.
- Bottom:** Three buttons labeled 'Save', 'Cancel', and 'Help'.

Figure 40: Internet Screen

DMZ

This feature, if enabled, allows the DMZ computer on your LAN to be exposed to all users on the Internet.

- This allows almost any application to be used on the "DMZ PC".
- The "DMZ PC" will receive all "Unknown" connections and data.
- If the DMZ feature is enabled, you must select the PC to be used as the "DMZ PC".



The "DMZ PC" is effectively outside the Firewall, making it more vulnerable to attacks. For this reason, you should only enable the DMZ feature when required.

Special Applications

If you use Internet applications which use non-standard connections or port numbers, you may find that they do not function correctly because they are blocked by the IAD-200 / IAD-200W's firewall. In this case, you can define the application as a "Special Application".

The *Special Applications* screen can be reached by clicking the *Special Applications* button on the *Internet* screen.

You can then define your Special Applications. You will need detailed information about the application; this is normally available from the supplier of the application.

Also, note that the terms "Incoming" and "Outgoing" on this screen refer to traffic from the client (PC) viewpoint

Special Applications							
Enable	Name	Outgoing Ports			Incoming Ports		
		Type	Start	Finish	Type	Start	Finish
1. <input type="checkbox"/>	<input type="text"/>	TCP	<input type="text"/>	<input type="text"/>	TCP	<input type="text"/>	<input type="text"/>
2. <input type="checkbox"/>	<input type="text"/>	TCP	<input type="text"/>	<input type="text"/>	TCP	<input type="text"/>	<input type="text"/>
3. <input type="checkbox"/>	<input type="text"/>	TCP	<input type="text"/>	<input type="text"/>	TCP	<input type="text"/>	<input type="text"/>
4. <input type="checkbox"/>	<input type="text"/>	TCP	<input type="text"/>	<input type="text"/>	TCP	<input type="text"/>	<input type="text"/>
5. <input type="checkbox"/>	<input type="text"/>	TCP	<input type="text"/>	<input type="text"/>	TCP	<input type="text"/>	<input type="text"/>
6. <input type="checkbox"/>	<input type="text"/>	TCP	<input type="text"/>	<input type="text"/>	TCP	<input type="text"/>	<input type="text"/>
7. <input type="checkbox"/>	<input type="text"/>	TCP	<input type="text"/>	<input type="text"/>	TCP	<input type="text"/>	<input type="text"/>
8. <input type="checkbox"/>	<input type="text"/>	TCP	<input type="text"/>	<input type="text"/>	TCP	<input type="text"/>	<input type="text"/>
9. <input type="checkbox"/>	<input type="text"/>	TCP	<input type="text"/>	<input type="text"/>	TCP	<input type="text"/>	<input type="text"/>
10. <input type="checkbox"/>	<input type="text"/>	TCP	<input type="text"/>	<input type="text"/>	TCP	<input type="text"/>	<input type="text"/>
11. <input type="checkbox"/>	<input type="text"/>	TCP	<input type="text"/>	<input type="text"/>	TCP	<input type="text"/>	<input type="text"/>
12. <input type="checkbox"/>	<input type="text"/>	TCP	<input type="text"/>	<input type="text"/>	TCP	<input type="text"/>	<input type="text"/>

Figure 41: Special Applications Screen

Data - Special Applications Screen

Checkbox	Use this to Enable or Disable this Special Application as required.
Name	Enter a descriptive name to identify this Special Application.
Incoming Ports	<ul style="list-style-type: none">• Type - Select the protocol (TCP or UDP) used when you receive data from the special application or service. (Note: Some applications use different protocols for outgoing and incoming data).• Start - Enter the beginning of the range of port numbers used by the application server, for data you receive. If the application uses a single port number, enter it in both the "Start" and "Finish" fields.• Finish - Enter the end of the range of port numbers used by the application server, for data you receive.
Outgoing Ports	<ul style="list-style-type: none">• Type - Select the protocol (TCP or UDP) used when you send data to the remote system or service.• Start - Enter the beginning of the range of port numbers used by the application server, for data you send to it. If the application uses a single port number, enter it in both the "Start" and "Finish" fields.• Finish - Enter the end of the range of port numbers used by the application server, for data you send to it. If the application uses a single port number, enter it in both the "Start" and "Finish" fields.

Using a Special Application

- Configure the *Special Applications* screen as required.
- On your PC, use the application normally. Remember that only one (1) PC can use each Special application at any time. Also, when 1 PC is finished using a particular Special Application, there may need to be a "Time-out" before another PC can use the same Special Application. The "Time-out" period may be up to 3 minutes.

URL Filter

If you want to limit access to certain sites on the Internet, you can use this feature. The URL filter will check each Web site access. If the address, or part of the address, is included in the block site list, access will be denied.

On the *Advanced Internet* screen, select the desired setting:

- **Disable** - disable this feature.
- **Block By Schedule** - block according to the settings on the *Schedule* page.
- **Block Always** - allow blocking all of the time, independent of the *Schedule* page.

Click the **Configure URL Filter** button to open the URL Filter screen, allowing you to create or modify the filter strings which determine which sites will be blocked.

The *URL Filter* screen is displayed when the **Configure URL Filter** button on the *Advanced Internet* screen is clicked.

URL Filter

When enabled, a request is blocked if any of these entries occur in the requested URL.

Current Filter Strings



Delete

Delete All

Add Filter String:

Add

Filter Strings should be as specific as possible.

Trusted PC

Allow this PC to Visit Blocked Sites

Trusted PC:

Save

Cancel

Help

Close

Figure 42: URL Filter Screen

Data - URL Filter Screen

Current Filter Strings	
Current Filter Strings	<p>The list contains the current list of items to block.</p> <ul style="list-style-type: none">• To add to the list, use the "Add" option below.• To delete an entry, select it and click Delete button.• To delete all entries, click the Delete All button.
Add Filter String	<p>To add to the current list, type the word or domain name you want to block into the field provided, then click the Add button.</p> <p>Filter strings should be as specific as possible. Otherwise, you may block access to many more sites than intended.</p>

Trusted PC	
Allow Trusted PC	Enable this to allow one computer to have unrestricted access to the Internet. For this PC, the URL filter will be ignored. If enabled, you must select the PC to be the trusted PC.
Trusted PC	Select the PC to be the Trusted PC.

Dynamic DNS (Domain Name Server)

This free service is very useful when combined with the *Virtual Server* feature. It allows Internet users to connect to your Virtual Servers using a URL, rather than an IP Address.

This also solves the problem of having a dynamic IP address. With a dynamic IP address, your IP address may change whenever you connect, which makes it difficult to connect to you.

DDNS Services work as follows:

1. You must register for the service at one of the listed DDNS Service providers.
2. After registration, use the Service provider's normal procedure to obtain your desired Domain name.
3. Enter your DDNS data on the IAD-200 / IAD-200W's DDNS screen, and enable the DDNS feature.
4. The IAD-200 / IAD-200W will then automatically ensure that your current IP Address is recorded at the DDNS service provider's Domain Name Server.
5. From the Internet, users will be able to connect to your Virtual Servers (or DMZ PC) using your Domain name, as shown on this screen.

Dynamic DNS Screen

Select *Advanced* on the main menu, then *Dynamic DNS*, to see a screen like the following:

DDNS

DDNS Service Use a Dynamic DNS Service

Service Provider:

DDNS Data

Host Name:

User Name:

Password:

DDNS Status:

Figure 43: DDNS Screen

Data - Dynamic DNS Screen

DDNS Service	
Use a Dynamic DNS Service	Use this to enable or disable the DDNS feature as required.
Service Provider	Select the desired DDNS Service provider.
Web Site	Click this button to open a new window and connect to the Web site of the selected DDNS service provider.

DDNS Data	
Host Name	Enter the domain name allocated to you by the DDNS Service. If you have more than one name, enter the name you wish to use.
User Name	Enter your Username for the DDNS Service. (TZO.com uses your E-mail address.)
Password	Enter your current password for the DDNS Service. (TZO.com calls this a key.)
Domain Name	Enter the domain name allocated to you by the DDNS Service. If you have more than one name, enter the name you wish to use.
DDNS Status	<ul style="list-style-type: none"> • This message is returned by the DDNS Server. • Normally, this message should be "Update successful" • If the message indicates some problem, you need to connect to the DDNS Service provider and correct this problem.

Firewall Rules

The **Firewall Rules** screen allows you to define "Firewall Rules" which can allow or prevent certain traffic. "Traffic" means incoming connection attempts, not packets.

By default:

- All Outgoing traffic is permitted.
- All Incoming traffic is denied.

Because of this default behavior, any **Outgoing** rules will generally **Block** traffic, and **Incoming** rules will generally **Allow** traffic.

Firewall Rules Screen

An example screen is shown below.

Firewall Rules

Incoming Rules

#	Enable	Service Name	Action	LAN Server IP address	WAN Users	Log
Default	Yes	Any	BLOCK always	--	Any	Match

Outgoing Rules

#	Enable	Service Name	Action	LAN Users	WAN Servers	Log
Default	Yes	Any	ALLOW always	Any	Any	Never

Figure 44 Firewall Screen

Data - Firewall Rules

Incoming Rules	
#	For the default rule, this will display "Default". For rules which you create, this will display a radio button which allows you to select the rule.
Enable	Indicates whether or not the rule is currently enabled. For rules you have added, this column will contain a checkbox, allowing you to easily enable or disable the rule. (Click "Save" after making any changes.)
Service Name	The Service covered by this rule.

Action	The action performed on connections which are covered by this rule.
LAN Server	The PC or Server on your LAN to which traffic covered by this rule will be sent.
WAN Users	The WAN IP address or addresses covered by this rule.
Log	Indicates whether or not connections covered by this rule should be logged.
Buttons	Use the <i>Add</i> button to create a new rule. The other buttons - <i>Edit</i> , <i>Move</i> , or <i>Delete</i> - require that a rule be selected first. Use the radio buttons in the left column to select the desired rule.
Outgoing Rules	
#	For the default rule, this will display "Default". For rules which you create, this will display a radio button which allows you to select the rule.
Enable	Indicates whether or not the rule is currently enabled. For rules you have added, this column will contain a checkbox, allowing you to easily enable or disable the rule. (Click "Save" after making any changes.)
Service Name	The Service covered by this rule.
Action	The action performed on connections which are covered by this rule.
LAN Users	The LAN PC or PCs covered by this rule.
WAN Servers	The WAN IP address or addresses covered by this rule.
Log	Indicates whether or not connections covered by this rule should be logged.
Buttons	Use the <i>Add</i> button to create a new rule. The other buttons - <i>Edit</i> , <i>Move</i> , or <i>Delete</i> - require that a rule be selected first. Use the radio buttons in the left column to select the desired rule.

Incoming Rules (Inbound Services)

This screen is displayed when the "Add" or "Edit" button for Incoming Rules is clicked.

Figure 45: Inbound Services Screen

Data - Incoming Rules Screen

Inbound Services	
Service	Select the desired Service. This determines which packets are covered by this rule. If necessary, you can define a new Service on the "Services" screen, by defining the protocols and port numbers used by the Service.
Action	<p>Select the desired action for packets covered by this rule:</p> <ul style="list-style-type: none"> • ALLOW always • ALLOW by schedule, otherwise Block • BLOCK always • BLOCK by schedule, otherwise Allow <p>Note:</p> <ul style="list-style-type: none"> • Any inbound traffic which is not allowed by rules you create will be blocked by the Default rule. • BLOCK rules are only useful if the traffic is already covered by an ALLOW rule. (That is, you wish to block a sub-set of traffic which is currently allowed by another rule.) • To define the Schedule used in these selections, use the "Schedule" screen.
Send to LAN Server	Select the PC or Server on your LAN which will receive the inbound traffic covered by this rule.
WAN Users	<p>These settings determine which packets are covered by the rule, based on their source (WAN) IP address. Select the desired option:</p> <ul style="list-style-type: none"> • Any - All IP addresses are covered by this rule. • Address range - If this option is selected, you must enter the desired values in the "Single/Start" and "Finish" fields to determine the address range. • Single address - Enter the required address in the "Single/Start" fields.

Log	<p>This determines whether packets covered by this rule are logged. Select the desired action.</p> <ul style="list-style-type: none"> • Always - always log traffic considered by this rule, whether it matches or not. (This is useful when debugging your rules.) • Never - never log traffic considered by this rule, whether it matches or not. • Match - Log traffic only if it matches this rule. (The action is determined by this rule.) • Not Match - Log traffic which is considered by this rule, but does not match (The action is NOT determined by this rule.)
------------	--

Outgoing Rules (Outbound Services)

This screen is displayed when the "Add" or "Edit" button for Outgoing Rules is clicked.

Figure 46: Outbound Services Screen

Data - Outbound Rules Screen

Outbound Services	
Service	Select the desired Service or application to be covered by this rule. If the desired service or application does not appear in the list, you must define it using the "Services" menu option
Action	<p>Select the desired action for packets covered by this rule:</p> <ul style="list-style-type: none"> • BLOCK always • BLOCK by schedule, otherwise Allow • ALLOW always • ALLOW by schedule, otherwise Block <p>Note:</p> <ul style="list-style-type: none"> • Any outbound traffic which is not blocked by rules you create will be allowed by the Default rule. • ALLOW rules are only useful if the traffic is already covered by a

	<p>BLOCK rule. (That is, you wish to allow a subset of traffic which is currently blocked by another rule.)</p> <ul style="list-style-type: none"> To define the Schedule used in these selections, use the "Schedule" screen.
LAN Users	<p>Select the desired option to determine which PCs are covered by this rule:</p> <ul style="list-style-type: none"> Any - All PCs are covered by this rule. Single PC - Only the selected PC is covered by this rule. If selected, you must select the PC. <p>PC - If using Single PC above, select the PC or Server on your LAN which will be covered by this rule.</p>
WAN Users	<p>These settings determine which packets are covered by the rule, based on their source (WAN) IP address. Select the desired option:</p> <ul style="list-style-type: none"> Any - All IP addresses are covered by this rule. Address range - If this option is selected, you must enter the "Start" and "Finish" fields. Single address - Enter the required address in the "Single/Start" fields.
Log	<p>This determines whether packets covered by this rule are logged. Select the desired action.</p> <ul style="list-style-type: none"> Always - always log traffic considered by this rule, whether it matches or not. (This is useful when debugging your rules.) Never - never log traffic considered by this rule, whether it matches or not. Match - Log traffic only it matches this rule. (The action is determined by this rule.) Not Match - Log traffic which is considered by this rule, but does not match (The action is NOT determined by this rule.)

User-defined Services

Services are used when creating Firewall Rules.

If you wish to create a firewall rule, but the required service is not listed in the "Service" list, you can use this feature to define the required service or services. Once created, these services will be listed in the "Service" list, and can be used when creating Firewall Rules.

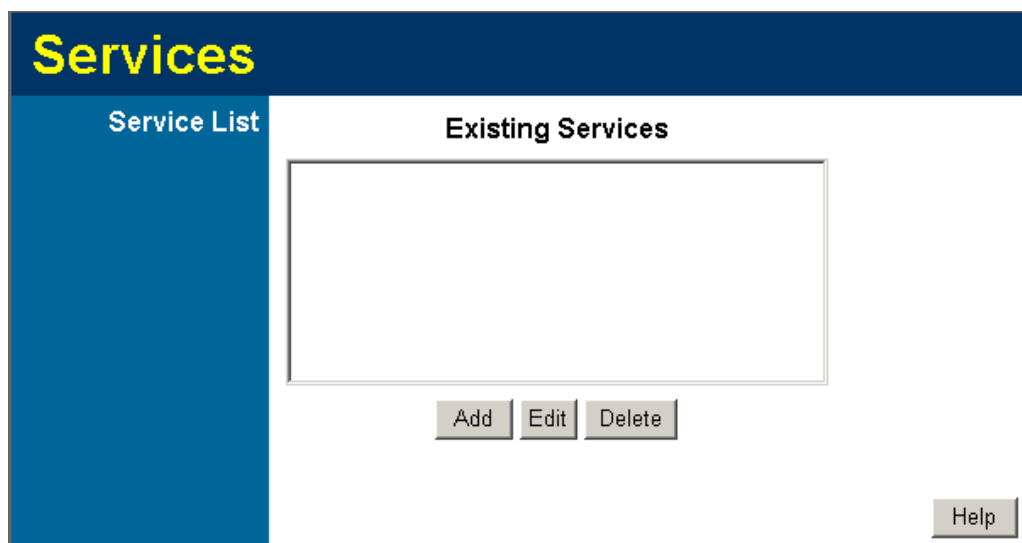


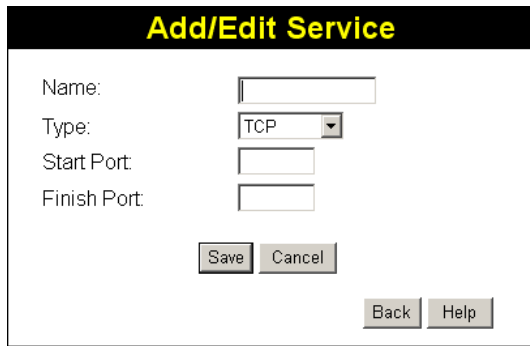
Figure 47: Add Services Screen

Data - User-defined Services

Services	
Existing Services	This lists any Services you have defined. If you have not defined any Services, this list will be empty. Once you define some services, they will be listed here, and also shown in the Service list used to create Firewall rules. (User-defined services are at the end of the list, after the pre-defined services.)
Add	Use this to open a sub-screen where you can add a new service.
Edit	To modify a service, select it, and then click this button.
Delete	Use this button to delete the selected service. You can delete any services you have defined.

Add/Edit Service

This screen is displayed when the *Add* or *Edit* button on the *Services* screen is clicked.



Add/Edit Service

Name:

Type:

Start Port:

Finish Port:

Figure 48 : Add/Edit Service

Data - Add/Edit Service

Services	
Name	If editing, this shows the current name of the Service. If adding a new service, this will be blank, and you should enter a suitable name.
Type	Select the protocol used by the Service.
Start Port	Enter the beginning of the port range used by the Service.
Finish Port	Enter the end of the port range used by the Service.

Options

This screen allows advanced users to enter or change a number of settings. For normal operation, there is no need to use this screen or change any settings.

An example *Options* screen is shown below.

The screenshot shows the 'Options' screen with a dark blue header. On the left is a blue sidebar with 'Internet' and 'UPnP' sections. The main area contains the following settings:

- Internet**
 - Respond to Ping on Internet (WAN) Port
 - MTU Size: (Bytes, 1~1500)
- UPnP**
 - Enable UPnP
 - Advertisement Period: (Minutes, 1~1440)
 - Advertisement Time to Live: (Hops, 1~255)

At the bottom right are three buttons: 'Save', 'Cancel', and 'Help'.

Figure 49: Options Screen

Data - Options Screen

Internet	
Respond to Ping	<ul style="list-style-type: none"> • If checked, the Wireless Router will respond to Ping (ICMP) packets received from the Internet. • If not checked, Ping (ICMP) packets from the Internet will be ignored. Disabling this option provides a slight increase in security.
MTU Size	Enter a value between 1 and 1500. Note: MTU (Maximum Transmission Unit) size should only be changed if advised to do so by Technical Support.
UPnP	
UPnP	<ul style="list-style-type: none"> • UPnP (Universal Plug and Play) allows automatic discovery and configuration of equipment attached to your LAN. UPnP is by supported Windows ME, XP, or later. • If Enabled, this device will be visible via UPnP. • If Disabled, this device will not be visible via UPnP.
Advertisement Period	Enter the desired value, in minutes. The valid range is from 1 to 1440.
Advertisement Time to Live	Enter the desired value, in hops. The valid range is from 1 to 255.

Schedule

This Schedule can be used for the Firewall Rules and the URL filter.

Schedule

Use 24 hour clock. On all day: 00:00 to 24:00
Off all day: All fields blank

Day	Session 1		Session 2	
	Start	Finish	Start	Finish
Monday	00:00	12:00	12:00	24:00
Tuesday	00:00	12:00	12:00	24:00
Wednesday	00:00	12:00	12:00	24:00
Thursday	00:00	12:00	12:00	24:00
Friday	00:00	12:00	12:00	24:00
Saturday	00:00	12:00	12:00	24:00
Sunday	00:00	12:00	12:00	24:00

Local Time

Time Zone: (GMT) Greenwich Mean Time : Edinburgh, London ▼

Adjust for Daylight Savings Time

Use this NTP Server . . .

Current Time: 2002-09-08 12:49:41

Figure 50: Schedule Screen

Data - Schedule Screen

Schedule	
Day	Each day of the week can be scheduled independently.
Session 1 Session 2	Two (2) separate sessions or periods can be defined. Session 2 can be left blank if not required.
Start Time	Enter the start using a 24 hr clock.
Finish Time	Enter the finish time using a 24 hr clock.
Local Time	
Time Zone	In order to display your local time correctly, you must select your "Time Zone" from the list.
Adjust for Daylight Savings Time	If your region uses Daylight Savings Time, you must manually check "Adjust for Daylight Savings Time" at the beginning of the

light Savings Time	adjustment period, and uncheck it at the end of the Daylight Savings period.
Use this NTP Server	If you prefer to use a particular NTP server as the primary NTP server, check the checkbox "Use this NTP Server" and enter the Server's IP address in the fields provided. If this setting is not enabled, the default NTP Servers are used.
Current Time	This displays the current time on the IAD-200 / IAD-200W, at the time the page is loaded.

Virtual Servers

This feature, sometimes called *Port Forwarding*, allows you to make Servers on your LAN accessible to Internet users. Normally, Internet users would not be able to access a server on your LAN because:

- Your Server does not have a valid external IP Address.
- Attempts to connect to devices on your LAN are blocked by the firewall in this device.

The "Virtual Server" feature solves these problems and allows Internet users to connect to your servers, as illustrated below.

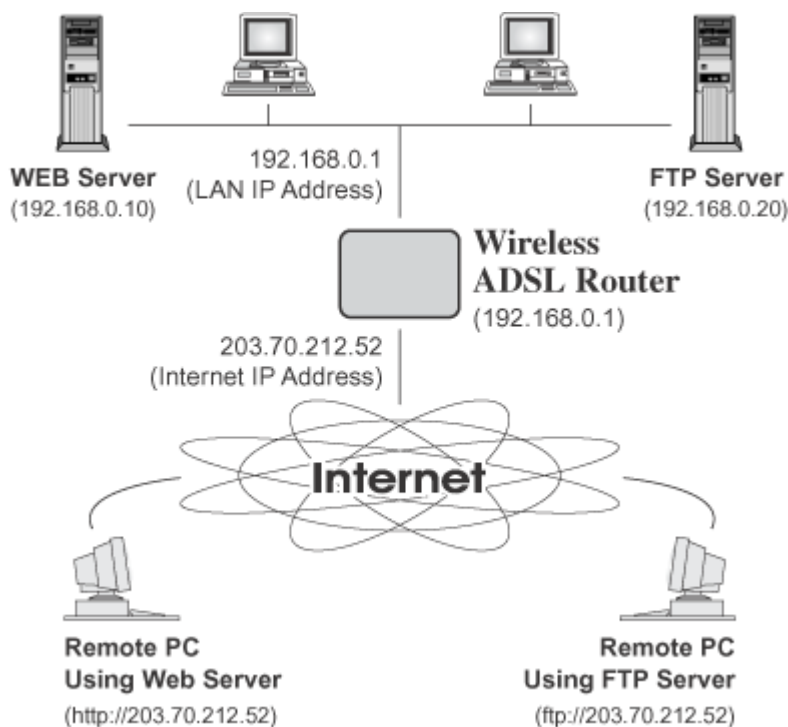


Figure 51: Virtual Servers

IP Address seen by Internet Users

Note that, in this illustration, both Internet users are connecting to the same IP Address, but using different protocols.

To Internet users, all virtual Servers on your LAN have the same IP Address. This IP Address is allocated by your ISP.

This address should be static, rather than dynamic, to make it easier for Internet users to connect to your Servers.

However, you can use the *DDNS (Dynamic DNS)* feature to allow users to connect to your Virtual Servers using a URL, instead of an IP Address.

Virtual Servers Screen

- The "Virtual Servers" feature allows Internet Users to access PCs on your LAN.
- The PCs must be running the appropriate Server Software.
- For Internet Users, ALL of your Servers have the same IP address. This IP address is allocated by your ISP.

- To make it easier for Internet users to connect to your Servers, you can use the "DDNS" feature. This allows Internet users to connect to your Servers with a URL, rather than an IP address. This technology works even if your ISP allocates dynamic IP addresses (IP address is allocated upon connection, so it may change each time you connect).

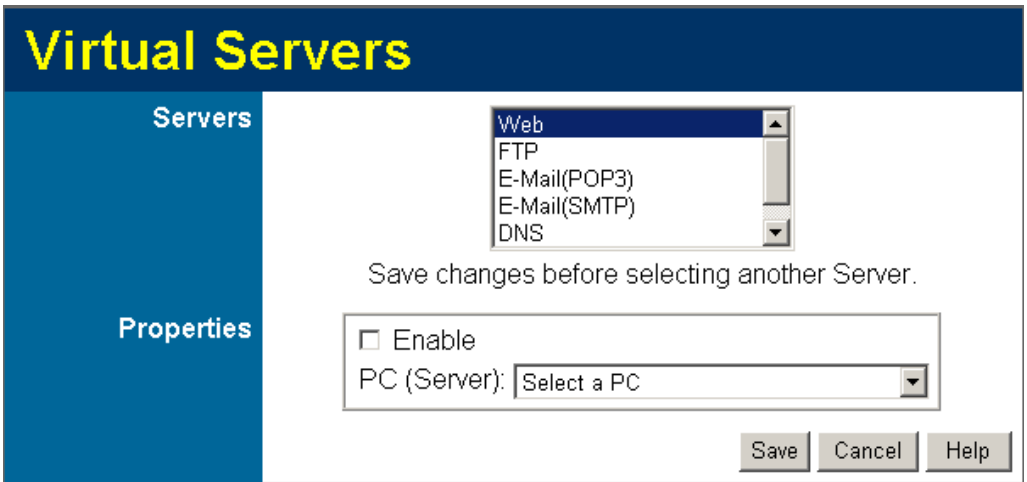


Figure 52: Virtual Servers Screen

Data - Virtual Servers Screen

Servers	
Servers	This lists a number of common Server types. If the desired Server type is not listed, you can create a Firewall Rule to achieve the same effect as the Virtual Server function.
Properties	
Enable	Use this to Enable or Disable support for this Server, as required. If Enabled, you must select the PC to which this traffic will be sent.
PC (Server)	Select the PC for this Server. The PC must be running the appropriate Server software.



Note!

For each entry, the PC must be running the appropriate Server software. If the desired Server type is not listed, you can define your own Servers, using the Firewall Rules.

Connecting to the Virtual Servers

Once configured, anyone on the Internet can connect to your Virtual Servers. They must use the Internet IP Address (the IP Address allocated to you by your ISP).

e.g.

`http://203.70.212.52`

`ftp://203.70.212.52`

It is more convenient if you are using a Fixed IP Address from your ISP, rather than Dynamic. However, you can use the *Dynamic DNS* feature to allow users to connect to your Virtual Servers using a URL, rather than an IP Address.

Note:

From the Internet, ALL Virtual Servers have the IP Address allocated by your ISP.

VoIP

To use the VoIP feature requires the following:

- **Standard Phone**

A standard analogue Phone must be connected to the **Phone** socket.

- **VoIP (SIP Server) Account**

Generally, you will need a SIP Server account from a VoIP service provider. The account details should include the SIP Register address, SIP Proxy address, SIP register port, SIP Proxy port, username, password, and telephone number. (Many providers use the same proxy server for both Proxy and Register.)

- **VoIP Configuration**

- Your VoIP service provider may perform the configuration for you.
- If not, refer to the following sections, which describe how to configure the Wireless VoIP Gateway.

Refer to *Chapter 7 - Operation and Status* for details on using VoIP once configuration has been completed.

VoIP Setup Screen

The VoIP setup screen is not on the menu; the VoIP link on the menu displays the *VoIP Status* screen, described later in this chapter.

To view the VoIP Setup Screen:

1. Connect to the IAD-200 / IAD-200W using its IP address and the path to the VoIP Setup screen (/set_voip.htm). For example, if the default IP address has not been changed, use the following:
`http://192.168.0.1/set_voip.htm`
2. You will see the VoIP Settings screen, like the example below. This screen allows input of the data necessary to establish a connection to the SIP Server.

VoIP Settings

Local Service	SIP Local Port: <input type="text" value="5060"/>																
SIP - Line 1	<input checked="" type="checkbox"/> Enable Line 1 SIP Proxy Address: <input type="text"/> SIP Proxy Port: <input type="text" value="5060"/> SIP Register Address: <input type="text"/> SIP Register Port: <input type="text" value="5060"/> Register Expiry Time: <input type="text" value="1200"/> (seconds) User Name: <input type="text"/> Password: <input type="text"/> Telephone Number: <input type="text"/> Display Name: <input type="text"/> Codec Priority: <table style="margin-left: 20px;"> <tr><td>1st:</td><td><input type="text" value="G.723.1"/></td></tr> <tr><td>2nd:</td><td><input type="text" value="G.723.1"/></td></tr> <tr><td>3rd:</td><td><input type="text" value="G.723.1"/></td></tr> <tr><td>4th:</td><td><input type="text" value="G.723.1"/></td></tr> </table> Sending Packet Size: <table style="margin-left: 20px;"> <tr><td>G.723.1:</td><td><input type="text" value="10ms"/></td></tr> <tr><td>G.729:</td><td><input type="text" value="10ms"/></td></tr> <tr><td>G.711 mu:</td><td><input type="text" value="10ms"/></td></tr> <tr><td>G.711 A:</td><td><input type="text" value="10ms"/></td></tr> </table>	1st:	<input type="text" value="G.723.1"/>	2nd:	<input type="text" value="G.723.1"/>	3rd:	<input type="text" value="G.723.1"/>	4th:	<input type="text" value="G.723.1"/>	G.723.1:	<input type="text" value="10ms"/>	G.729:	<input type="text" value="10ms"/>	G.711 mu:	<input type="text" value="10ms"/>	G.711 A:	<input type="text" value="10ms"/>
1st:	<input type="text" value="G.723.1"/>																
2nd:	<input type="text" value="G.723.1"/>																
3rd:	<input type="text" value="G.723.1"/>																
4th:	<input type="text" value="G.723.1"/>																
G.723.1:	<input type="text" value="10ms"/>																
G.729:	<input type="text" value="10ms"/>																
G.711 mu:	<input type="text" value="10ms"/>																
G.711 A:	<input type="text" value="10ms"/>																

Figure 53: VoIP Settings

VoIP Settings

Local Service	
SIP Local Port	This port is used for peer-to-peer (direct) connections to another device, when no SIP server is used. Normally, this should be left at the default value. Any other devices you wish to connect to must use the same port number.
SIP - Line 1	
Enable Line1	Check this if you wish to connect to a SIP Server. If enabled, you must provide the following data.
SIP Proxy address	Enter the address of the SIP Proxy (Server) used by your VoIP provider.
SIP Proxy port	Enter the port used for connections to the Server above.
SIP register address	Enter the address of the SIP Register (Server) used by your VoIP provider. This may be the same server as the "Proxy" above.

SIP register port	Enter the port used for "Register" connections to the Server above.
Register Expiry Time	This sets the "Idle Timeout" for the SIP Server Login. An Idle connection will be terminated after this time period. Enter the desired value.
User Name	Enter the login name for connections to the SIP Server.
Password	Enter the password associated with the login name above.
Telephone Number	Enter the telephone number provided to you by the VoIP Service provider. If you have a range of numbers, enter the number you wish to use for this line.
Display Name	This name is used by the SIP Server, and may be visible to callers.



For the comparable issue, you should set up the same voice codec and packet size on the IAD-200/200W and your IP phone.

Note!

VoIP Status Screen

This screen allows you to check the status of the connection to the SIP Server. It is accessed via the *VoIP* link on the *Advanced* menu. A sample screen is shown below.

VoIP Status

Line 1

VoIP Status: enable
Line Status: OFF
Display Name: Allen
Telephone Number: 529158
Registration Status: Success

Refresh Screen Help

Figure 54: VoIP Status Screen

VoIP Status

Line 1	
VoIP Status	This indicates if VoIP is enabled or disabled.
Line Status	Sometimes called "Hook Status"; this indicates the status on the telephone line. ON indicates the receiver is "on-the-hook", while OFF indicates the receiver is "off-the-hook".

Display Name	<p>This is the name you chose when you first opened your account. Your "Display Name" will be visible to other individuals with caller ID.</p> <p>If your display name appears as "UNAVAILABLE", either your VoIP account has not been established or your router has been unable to connect to the VoIP Server.</p>
Telephone Number	<p>The telephone number associated with this line. This is the telephone number other people will use when they call you. This number was assigned to you when you first established your account. Each line can have a different telephone number.</p> <p>If this displays "UNAVAILABLE", either your VoIP account has not been established or this device was unable to connect to the SIP server.</p>
Registration Status	<p>This shows the status of the connection to the SIP Server. When your router has successfully connected, the status will be displayed as "Success".</p> <p>However, if you do not have VoIP account or if the router could not connect to the VoIP server, the status will be displayed as "Idle".</p>

PSTN Settings Screen

This screen has some additional settings related to the use of the PSTN line, assuming the PSTN line is connected, which is strongly recommended.

PSTN Settings

PSTN Relay	PSTN Prefix: <input style="width: 50px;" type="text" value="*"/> PSTN Fixed Relay Tel. No. 1: <input style="width: 150px;" type="text"/> Tel. No. 2: <input style="width: 150px;" type="text"/> Tel. No. 3: <input style="width: 150px;" type="text"/> Tel. No. 4: <input style="width: 150px;" type="text"/> These numbers are always sent via PSTN.
PSTN Rollover	<input checked="" type="checkbox"/> Use PSTN for all calls if VoIP is unavailable. Note: VoIP numbers may not function when using PSTN.

Figure 55: PSTN Screen

PSTN Settings

PSTN Relay	
PSTN Prefix	<p>The PSTN Relay allows certain calls to be diverted to the PSTN link, even though VoIP is working properly.</p> <p>This PSTN prefix means that any number beginning with this prefix will be diverted to PSTN (the prefix itself is deleted, then the remainder of the number is dialed via PSTN).</p> <ul style="list-style-type: none">• If the prefix is a single character, that character must be *• If the prefix is multiple characters, all characters after the 1st character must be digits. The 1st char character can be * or a digit. <p>Note: When dialing, do not wait for a 2nd dial tone for the PSTN; there is no 2nd dial tone. Just dial the PSTN prefix and the desired phone number.</p>
PSTN Fixed Relay	<p>This provides another method of diverting calls to the PSTN link. Any Telephone numbers listed in this table will always be dialed via PSTN.</p> <p>This feature should be used to direct emergency numbers to the PSTN.</p>
PSTN Rollover	
Use PSTN...	<p>If enabled, then when VoIP is unavailable, all calls from the handset will be sent via PSTN. (This is the same effect as occurs when the power is off.) However, note that VoIP phone numbers (beginning with are often unreachable via PSTN.</p> <p>Normally, this setting should be Enabled.</p>

Chapter 6

Advanced Administration



This Chapter explains the settings available via the "Administration" section of the menu.

Overview

Normally, it is not necessary to use these screens, or change any settings. These screens and settings are provided to deal with non-standard situations, or to provide additional options for advanced users.

The available settings and features are:

PC Database	This is the list of PCs shown when you select the "DMZ PC" or a "Virtual Server". This database is maintained automatically, but you can add and delete entries for PCs which use a Fixed (Static) IP Address.
Config File	Backup or restore the configuration file for the IAD-200 / IAD-200W. This file contains all the configuration data.
Logging & Email	View or clear all logs, set E-Mailing of log files and alerts.
Diagnostics	Perform a Ping or DNS Lookup.
Remote Admin	Allow settings to be changed from the Internet.
Routing	Only required if your LAN has other Routers or Gateways.
Upgrade Firmware	Upgrade the Firmware (software) installed in your IAD-200 / IAD-200W.

PC Database

The PC Database is used whenever you need to select a PC (e.g. for the "DMZ" PC).

- It eliminates the need to enter IP addresses.
- Also, you do not need to use fixed IP addresses on your LAN.

However, if you do use a fixed IP address on some devices on your LAN, you should enter details of each such device into the PC database, using the PC Database screen.

PC Database Screen

An example *PC Database* screen is shown below.

PC Database

DHCP Clients are automatically added and updated.
If not listed, try restarting the PC.

PCs using a Fixed IP address can be added and deleted below.

Known PCs

Delete

< Add

Name:

IP Address: ...

Refresh Generate Report

Advanced Administration Help

Figure 56: PC Database

- PCs which are "DHCP Clients" are automatically added to the database, and updated as required.
- By default, non-Server versions of Windows act as "DHCP Clients"; this setting is called "Obtain an IP Address automatically".
- The IAD-200 / IAD-200W uses the "Hardware Address" to identify each PC, not the name or IP address. The "Hardware Address" can only change if you change the PC's network card or adapter.
- This system means you do NOT need to use Fixed (static) IP addresses on your LAN. However, you can add PCs using Fixed (static) IP Addresses to the PC database if required.

Data - PC Database Screen

Known PCs	This lists all current entries. Data displayed is <i>name (IP Address) type</i> . The "type" indicates whether the PC is connected to the LAN.
Name	If adding a new PC to the list, enter its name here. It is best if this matches the PC's "hostname".
IP Address	Enter the IP Address of the PC. The PC will be sent a "ping" to determine its hardware address. If the PC is not available (not connected, or not powered On) you will not be able to add it.
Buttons	
Add	This will add the new PC to the list. The PC will be sent a "ping" to determine its hardware address. If the PC is not available (not connected, or not powered On) you will not be able to add it.
Delete	Delete the selected PC from the list. This should be done in 2 situations: <ul style="list-style-type: none">• The PC has been removed from your LAN.• The entry is incorrect.
Refresh	Update the data on screen.
Generate Report	Display a read-only list showing full details of all entries in the PC database.
Advanced Administration	View the Advanced version of the PC database screen - <i>PC Database (Admin)</i> . See below for details.

PC Database - Advanced

This screen is displayed if the "Advanced Administration" button on the *PC Database* is clicked. It provides more control than the standard *PC Database* screen.

PC Database - Advanced

Any PC may be added, edited or deleted. If adding a PC which is not connected and On, you must provide the MAC (hardware) address

Known PCs

EditDelete

PC Properties

Name:

IP Address: Automatic (DHCP Client)
 DHCP Client - reserved IP address:

Fixed IP address (set on PC):

MAC Address: Automatic discovery (PC must be available on LAN)
 MAC address is

Clear Form

Add as New EntryUpdate Selected PC

RefreshGenerate ReportStandard ScreenHelp

Figure 57: PC Database (Admin)

Data - Advanced PC Database

Known PCs	This lists all current entries. Data displayed is <i>name (IP Address) type</i> . The "type" indicates whether the PC is connected to the LAN.
PC Properties	
Name	If adding a new PC to the list, enter its name here. It is best if this matches the PC's "hostname".

IP Address	<p>Select the appropriate option:</p> <ul style="list-style-type: none"> • Automatic - The PC is set to be a DHCP client (Windows: "Obtain an IP address automatically"). The IAD-200 / IAD-200W will allocate an IP address to this PC when requested to do so. The IP address could change, but normally won't. • DCHP Client - Reserved IP Address - Select this if the PC is set to be a DHCP client, and you wish to guarantee that the IAD-200 / IAD-200W will always allocate the same IP Address to this PC. Enter the required IP address. • Fixed IP Address - Select this if the PC is using a Fixed (Static) IP address. Enter the IP address allocated to the PC. (The PC itself must be configured to use this IP address.)
MAC Address	<p>Select the appropriate option</p> <ul style="list-style-type: none"> • Automatic discovery - Select this to have the IAD-200 / IAD-200W contact the PC and find its MAC address. This is only possible if the PC is connected to the LAN and powered On. • MAC address is - Enter the MAC address on the PC. The MAC address is also called the "Hardware Address", "Physical Address", or "Network Adapter Address". The IAD-200 / IAD-200W uses this to provide a unique identifier for each PC. Because of this, the MAC address can NOT be left blank.
Buttons	
Add as New Entry	<p>Add a new PC to the list, using the data in the "Properties" box. If "Automatic discovery" (for MAC address) is selected, the PC will be sent a "ping" to determine its hardware address. This will fail unless the PC is connected to the LAN, and powered on.</p>
Update Selected PC	<p>Update (modify) the selected PC, using the data in the "Properties" box.</p>
Clear Form	<p>Clear the "Properties" box, ready for entering data for a new PC.</p>
Refresh	<p>Update the data on screen.</p>
Generate Report	<p>Display a read-only list showing full details of all entries in the PC database.</p>
Standard Screen	<p>Click this to view the standard <i>PC Database</i> screen.</p>

Config File

This feature allows you to download the current settings from the IAD-200 / IAD-200W, and save them to a file on your PC.

You can restore a previously-downloaded configuration file to the IAD-200 / IAD-200W, by uploading it to the IAD-200 / IAD-200W.

This screen also allows you to set the IAD-200 / IAD-200W back to its factory default configuration. Any existing settings will be deleted.

An example *Config File* screen is shown below.

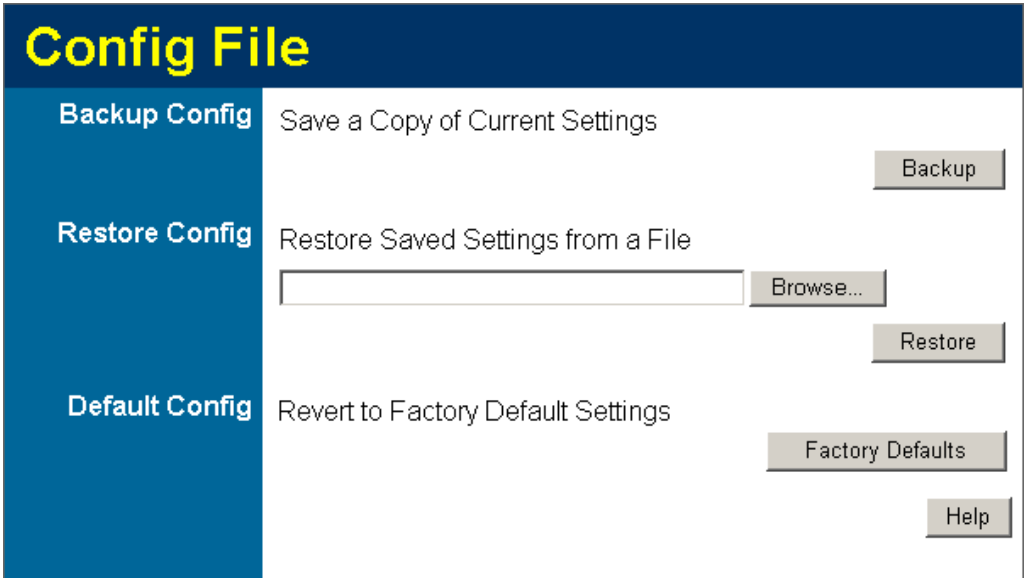


Figure 58: Config File Screen

Data - Config File Screen

Backup Config	Use this to download a copy of the current configuration, and store the file on your PC. Click <i>Download</i> to start the download.
Restore Config	<p>This allows you to restore a previously-saved configuration file back to the IAD-200 / IAD-200W.</p> <p>Click <i>Browse</i> to select the configuration file, then click <i>Restore</i> to upload the configuration file.</p> <p>WARNING !</p> <p>Uploading a configuration file will destroy (overwrite) ALL of the existing settings.</p>
Default Config	<p>Clicking the <i>Factory Defaults</i> button will reset the IAD-200 / IAD-200W to its factory default settings.</p> <p>WARNING !</p> <p>This will delete ALL of the existing settings.</p>

Logs

The Logs record various types of activity on the IAD-200 / IAD-200W. This data is useful for troubleshooting, but enabling all logs will generate a large amount of data and adversely affect performance.

Since only a limited amount of log data can be stored in the IAD-200 / IAD-200W, log data can also be E-mailed to your PC. Use the *E-mail* screen to configure this feature.

Logs Current time: 2005-09-13 02:46:39

```
Sun, 2002-09-08 12:10:20 - PAP authentication
Sun, 2002-09-08 12:10:23 - Stop Voice
Sun, 2002-09-08 12:10:26 - Starting Voice
Sun, 2002-09-08 12:10:26 - Send out NTP reque
Tue, 2005-09-13 02:25:37 - Receive NTP Reply
Tue, 2005-09-13 02:25:42 - Stop Voice
Tue, 2005-09-13 02:25:45 - Starting Voice
Tue, 2005-09-13 02:31:17 - Administrator logi
Tue, 2005-09-13 02:33:40 - Stop Voice
Tue, 2005-09-13 02:33:43 - Starting Voice
Tue, 2005-09-13 02:34:55 - Stop Voice
Tue, 2005-09-13 02:34:58 - Starting Voice
Tue, 2005-09-13 02:37:55 - Stop Voice
Tue, 2005-09-13 02:37:58 - Starting Voice
```

Refresh Clear Log Send Log

Include in Log

- Attempted access to blocked sites
- Connections to the Web-based interface of this Router
- Router operation (start up, get time etc)
- Known DoS attacks and Port Scans

Syslog

- Disable
- Broadcast on LAN
- Send to this Syslog Server: [] . [] . [] . []

Figure 59: Logs Screen

Data - Logs Screen

Logs	
Current Time	The current time on the IAD-200 / IAD-200W is displayed.
Log Data	Current log data is displayed in this panel.

Buttons	<p>There are three (3) buttons</p> <ul style="list-style-type: none"> • Refresh - Update the log data. • Clear Log - Clear the log, and restart it. This makes new messages easier to read. • Send Log - E-mail the log immediately. This is only functional if the <i>E-mail</i> screen has been configured.
Logs	
Include (Checkboxes)	<p>Use these checkboxes to determine which events are included in the log. Checking all options will increase the size of the log, so it is good practice to disable any events which are not really required.</p> <ul style="list-style-type: none"> • Attempted access to blocked sites - If checked, attempted Internet accesses which were blocked are logged. • Connections to the Web-based interface of this Router - If checked, this will log connections TO this Router, rather than through this Router to the Internet. • Router operation - If checked, other Router operations (not covered by the selections above) will be logged. • Known DoS attacks and Port Scans - If checked, Denial of Service attacks, as well as port scans, will be logged.
Syslog	
Disable	Data is not sent to a Syslog Server.
Broadcast on LAN	The Syslog data is broadcast, rather than sent to a specific Syslog server. Use this if your Syslog Server does not have a fixed IP address.
Syslog	If your Syslog server has a fixed IP address, select this option, and enter the IP address of your Syslog server.

E-mail

This screen allows you to E-mail Logs and Alerts. A sample screen is shown below.

E-Mail

E-mail Notification

Turn E-mail Notification On

Send to this E-mail Address:

Outgoing (SMTP) Mail Server:

My SMTP Mail Server requires authentication

User Name:

Password:

E-mail Alerts

Send E-Mail alerts immediately

If a DoS attack is detected.

If a Port Scan is detected.

If someone attempts to access a blocked site.

E-mail Logs

Send Logs According to this Schedule

Hourly

Day

Time a.m. p.m.

Figure 60: E-mail Screen

Data - E-mail Screen

E-Mail Notification	
Turn E-mail Notification on	Check this box to enable this feature. If enabled, the E-mail address information (below) must be provided.
Send to this E-mail address	Enter the E-mail address the Log is to be sent to. The E-mail will also show this address as the Sender's address.
Outgoing (SMTP) Mail Server	Enter the address or IP address of the SMTP (Simple Mail Transport Protocol) Server you use for outgoing E-mail.
My SMTP Mail Server requires authentication	To stop spammers, many SMTP mail servers require you to log in to send mail. In this case, enable this checkbox, and enter the login information (User name and Password) in the fields below.
User Name	If you have enabled "My SMTP Mail Server requires authentication" above, enter the User Name required to login to your SMTP Server.

Password	If you have enabled "My SMTP Mail Server requires authentication" above, enter the password required to login to your SMTP Server.
E-mail Alerts	
Send E-mail alerts immediately	<p>You can choose to have alerts E-mailed to you, by checking the desired checkboxes. The Broadband ADSL Router can send an immediate alert when it detects a significant security incident such as</p> <ul style="list-style-type: none"> • A known hacker attack is directed at your IP address • A computer on the Internet scans your IP address for open ports • Someone on your LAN (Local Area Network) tries to visit a blocked site.
E-mail Logs	
Send Logs	<p>Select the desired option for sending the log by E-mail.</p> <ul style="list-style-type: none"> • Never (default) - This feature is disabled; Logs are not sent. • When log is full - The time is not fixed. The log will be sent when the log is full, which will depend on the volume of traffic. • Hourly, Daily, Weekly... - The log is sent on the interval specified. <ul style="list-style-type: none"> • If Daily is selected, the log is sent at the time specified. Select the time of day you wish the E-mail to be sent. • If Weekly is selected, the log is sent once per week, on the specified day, at the specified time. Select the day and the time of day you wish the E-mail to be sent. <p>Note:</p> <p>If the log is full before the time specified to send it, it will be sent regardless of the day and time specified.</p>

Diagnostics

This screen allows you to perform a "Ping" or a "DNS lookup". These activities can be useful in solving network problems.

An example *Network Diagnostics* screen is shown below.

Figure 61: Network Diagnostics Screen

Data - Network Diagnostics Screen

Ping	
Ping this IP Address	Enter the IP address you wish to ping. The IP address can be on your LAN, or on the Internet. Note that if the address is on the Internet, and no connection currently exists, you could get a "Timeout" error. In that case, wait a few seconds and try again.
Ping Button	After entering the IP address, click this button to start the "Ping" procedure. The results will be displayed in the <i>Ping Results</i> pane.
DNS Lookup	
Internet name	Enter the Domain name or URL for which you want a DNS (Domain Name Server) lookup. Note that if the address is on the Internet, and no connection currently exists, you could get a "Timeout" error. In that case, wait a few seconds and try again.
Lookup Button	After entering the Domain name/URL, click this button to start the "DNS Lookup" procedure.
Routing	
Display	Click this button to display the internal routing table. This information can be used by Technical Support and other staff who understand Routing Tables.

Remote Administration

If enabled, this feature allows you to manage the IAD-200 / IAD-200W via the Internet.

Figure 62: Remote Administration Screen

Data - Remote Administration Screen

Remote Administration	
Enable Remote Management	<p>Check to allow administration/management via the Internet. (To connect, see below).</p> <p>If Disabled, this device will ignore Administration connection attempts from the Internet.</p>
Current IP Address	<p>This is the current address you will use when accessing this device from the Internet. To connect, see details and an example below.</p>
Port Number	<p>Enter a port number between 1 and 65535. The default for HTTP (Web) connections is port 80, but using port 80 will prevent the use of a Web "Virtual Server" on your LAN. So using a different port number is recommended. The default value is 8080.</p> <p>The port number must be specified in your Browser when you connect. See the following section for details.</p>
Access Permission	
Allow Remote Access	<p>Select the desired option.</p> <ul style="list-style-type: none"> • Everyone - allow access by everyone on the Internet. • Only This Computer - allow access by only one IP address. Enter the desired IP address. • IP Address Range - allow access from a range of IP addresses on the Internet. Enter a beginning and ending IP address to define the allowed range.

	For security, you should restrict access to as few external IP addresses as practical.
--	--

To connect from a remote PC via the Internet

1. Ensure your Internet connection is established, and start your Web Browser.
2. In the "Address" bar, enter "HTTP://" followed by the Internet IP Address of the IAD-200 / IAD-200W. If the port number is not 80, the port number is also required. (After the IP Address, enter ":" followed by the port number.)
e.g.

HTTP://123.123.123.123:8080

This example assumes the WAN IP Address is 123.123.123.123, and the port number is 8080.

3. You will then be prompted for the login name and password for this device.

Routing

Overview

- If you don't have other Routers or Gateways on your LAN, you can ignore the "Routing" page completely.
- If the IAD-200 / IAD-200W is only acting as a Gateway for the local LAN segment, ignore the "Routing" page even if your LAN has other Routers.
- If your LAN has a standard Router (e.g. Cisco) on your LAN, and the IAD-200 / IAD-200W is to act as a Gateway for all LAN segments, enable RIP (Routing Information Protocol) and ignore the Static Routing table.
- If your LAN has other Gateways and Routers, and you wish to control which LAN segments use each Gateway, do NOT enable RIP (Routing Information Protocol). Configure the Static Routing table instead. (You also need to configure the other Routers.)
- If using Windows 2000 Data center Server as a software Router, enable RIP on the IAD-200 / IAD-200W, and ensure the following Windows 2000 settings are correct:
 - Open *Routing and Remote Access*
 - In the console tree, select *Routing and Remote Access*, [server name], *IP Routing*, *RIP*
 - In the "Details" pane, right-click the interface you want to configure for RIP version 2, and then click "Properties".
 - On the "General" tab, set *Outgoing packet protocol* to "RIP version 2 broadcast", and *Incoming packet protocol* to "RIP version 1 and 2".

Routing Screen

The routing table is accessed by the *Routing* link on the *Administration* menu.

Using this Screen

Generally, you will use either RIP (Routing Information Protocol) OR the Static Routing Table, as explained above, although it is possible to use both methods simultaneously.

Static Routing Table

- If RIP is not used, an entry in the routing table is required for each LAN segment on your Network, other than the segment to which this device is attached.
- The other Routers must also be configured. See *Configuring Other Routers on your LAN* later in this chapter for further details and an example.

Routing

RIP

RIP Direction

RIP Version

Static Routing

Static Routing Table Entries

Figure 63: Routing Screen

Data - Routing Screen

RIP	
RIP Direction	Select the desired RIP Direction.
RIP Version	Choose the RIP Version for the Server.
Static Routing	
Static Routing Table Entries	<p>This list shows all entries in the Routing Table.</p> <ul style="list-style-type: none"> This area shows details of the selected item in the list. Change any the properties as required, then click the "Edit" button to save the changes to the selected entry.
Buttons	
Add	Add a new entry to the Static Routing table, using the data shown in the "Properties" area on screen. The entry selected in the list is ignored, and has no effect.
Edit	Update the current Static Routing Table entry, using the data shown in the table area on screen.
Delete	Delete the current Static Routing Table entry.
Save	Save the RIP setting. This has no effect on the Static Routing Table.

Configuring Other Routers on your LAN

It is essential that all IP packets for devices not on the local LAN be passed to the IAD-200 / IAD-200W, so that they can be forwarded to the external LAN, WAN, or Internet. To achieve this, the local LAN must be configured to use the IAD-200 / IAD-200W as the *Default Route* or *Default Gateway*.

Local Router

The local router is the Router installed on the same LAN segment as the IAD-200 / IAD-200W. This router requires that the *Default Route* is the IAD-200 / IAD-200W itself. Typically, routers have a special entry for the *Default Route*. It should be configured as follows.

Destination IP Address	Normally 0.0.0.0, but check your router documentation.
Network Mask	Normally 0.0.0.0, but check your router documentation.
Gateway IP Address	The IP Address of the IAD-200 / IAD-200W.
Metric	1

Other Routers on the Local LAN

Other routers on the local LAN must use the IAD-200 / IAD-200W's *Local Router* as the *Default Route*. The entries will be the same as the IAD-200 / IAD-200W's local router, with the exception of the *Gateway IP Address*.

- For a router with a direct connection to the IAD-200 / IAD-200W's local Router, the *Gateway IP Address* is the address of the IAD-200 / IAD-200W's local router.
- For routers which must forward packets to another router before reaching the IAD-200 / IAD-200W's local router, the *Gateway IP Address* is the address of the intermediate router.

Static Routing - Example

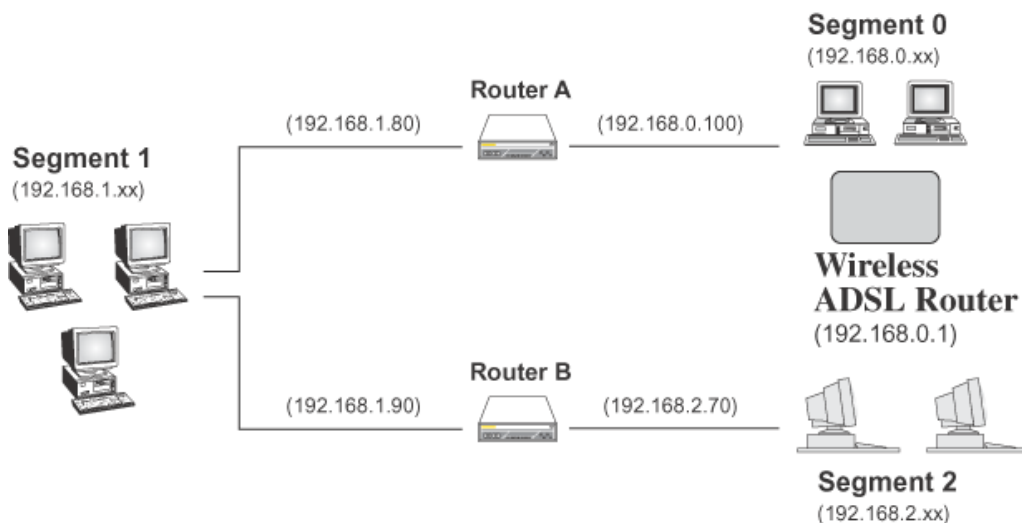


Figure 64: Routing Example

For the IAD-200 / IAD-200W's Routing Table

For the LAN shown above, with 2 routers and 3 LAN segments, the IAD-200 / IAD-200W requires 2 entries as follows.

Entry 1 (Segment 1)	
Destination IP Address	192.168.1.0
Network Mask	255.255.255.0 (Standard Class C)
Gateway IP Address	192.168.0.100 (IAD-200 / IAD-200W's local

	Router)
Metric	2
Entry 2 (Segment 2)	
Destination IP Address	192.168.2.0
Network Mask	255.255.255.0 (Standard Class C)
Gateway IP Address	192.168.0.100
Metric	3

For Router A's Default Route

Destination IP Address	0.0.0.0
Network Mask	0.0.0.0
Gateway IP Address	192.168.0.1 (IAD-200 / IAD-200W's IP Address)

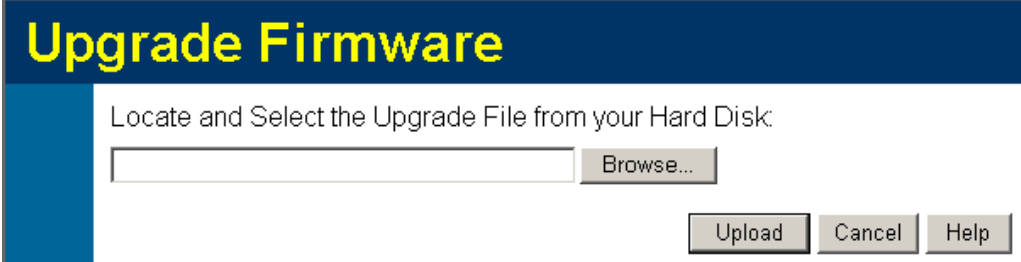
For Router B's Default Route

Destination IP Address	0.0.0.0
Network Mask	0.0.0.0
Gateway IP Address	192.168.1.80 (IAD-200 / IAD-200W's local router)

Upgrade Firmware

The firmware (software) in the IAD-200 / IAD-200W can be upgraded using your Web Browser.

You must first download the upgrade file, then select *Upgrade Firmware* on the *Administration* menu. You will see a screen like the following.



Upgrade Firmware

Locate and Select the Upgrade File from your Hard Disk:

Figure 65: Router Upgrade Screen

To perform the Firmware Upgrade:

1. Click the *Browse* button and navigate to the location of the upgrade file.
2. Select the upgrade file. Its name will appear in the *Upgrade File* field.
3. Click the *Upload* button to commence the firmware upgrade.



Note!

The IAD-200 / IAD-200W is unavailable during the upgrade process, and must restart when the upgrade is completed. Any connections to or through the IAD-200 / IAD-200W will be lost.

Chapter 7

Operation and Status



This Chapter details the operation of the IAD-200 / IAD-200W and the status screens.

Operation

Once both the IAD-200 / IAD-200W and the PCs are configured, operation is automatic.

However, there are some situations where additional Internet configuration may be required. Refer to *Chapter 5 - Advanced Features* for further details.

Status Screen

Use the *Status* link on the main menu to view this screen.

System	Device Name:	IAD-200W
	Firmware Version:	0.01.27
Modem	Modem Status	Connected
	DownStream Connection Speed	1024 kbps
	UpStream Connection Speed	64 kbps
	VPI	0
	VCI	33
Internet	Connection Method:	PPPoE
	Internet Connection:	Active
	Internet IP Address:	203.73.79.225
		Connection Details
LAN	IP Address:	192.168.0.1
	Network Mask:	255.255.255.0
	DHCP Server:	On
	MAC Address	00:30:4F:FF:A0:CE
Wireless	Name (SSID)	Wireless
	Region	Europe
	Channel	3
	Wireless AP	enable
	Broadcast Name	enable

Figure 66: Status Screen

Data - Status Screen

System	
Device Name	The current name of the Router. This name is also the "hostname" for users with an "@Home" type connection.
Firmware Version	The version of the current firmware installed.
ADSL	
Modem Status	This indicates the status of the ADSL modem component.
DownStream Connection Speed	Displays the speed for the DownStream Connection.
UpStream Connection Speed	If connected, displays the speed for the Up Stream (upload) ADSL Connection.
VC 1 Status	The current VCI setting.
VPI	The current VPI setting.
ADSL Details	Click this button to open a sub-window and view the details of each VC (Virtual Circuit).

Internet (VC1)	
Connection Method	Displays the current connection method, as set in the <i>Setup Wizard</i> .
Connection Status	<p>This indicates the current status of the Internet Connection</p> <ul style="list-style-type: none"> • Active - Connection exists • Idle - No current connection, but no error has been detected. This condition normally arises when an idle connection is automatically terminated. • Failed - The connection was terminated abnormally. This could be caused by Modem failure, or the loss of the connection to the ISP's server. <p>If there is an error, you can click the "Connection Details" button to find out more information.</p>
Internet IP Address	This IP Address is allocated by the ISP (Internet Service Provider). If using a dynamic IP address, and no connection currently exists, this information is unavailable.
Connection Details	Click this button to open a sub-window and view a detailed description of the current connection. Depending on the type of connection, a "log" may also be available.
LAN	
IP Address	The IP Address of the IAD-200 / IAD-200W.
Network Mask	The Network Mask (Subnet Mask) for the IP Address above.
DHCP Server	This shows the status of the DHCP Server function. The value will be "Enabled" or "Disabled".
MAC Address	This shows the MAC Address for the IAD-200 / IAD-200W, as seen on the LAN interface.
Wireless (IAD-200W only)	
Name (SSID)	If using an ESS (Extended Service Set, with multiple access points) this ID is called an ESSID (Extended Service Set Identifier).
Region	The current region, as set on the Wireless screen.
Channel	This shows the Channel currently used, as set on the Wireless screen.
Wireless AP	This indicates whether or not the Wireless Access Point feature is enabled.
Broadcast Name	This indicates whether or not the SSID is Broadcast. This setting is on the Wireless screen.
Buttons	
ADSL Details	View the details of each VC (Virtual Circuit).
Connection Details	Click this button to open a sub-window and view a detailed description of the current connection.
Attached Devices	This will open a sub-window, showing all LAN and Wireless

	devices currently on the network.
Refresh Screen	Update the data displayed on screen.

Connection Status - PPPoE & PPPoA

If using PPPoE (PPP over Ethernet) or PPPoA (PPP over ATM), a screen like the following example will be displayed when the "Connection Details" button is clicked.

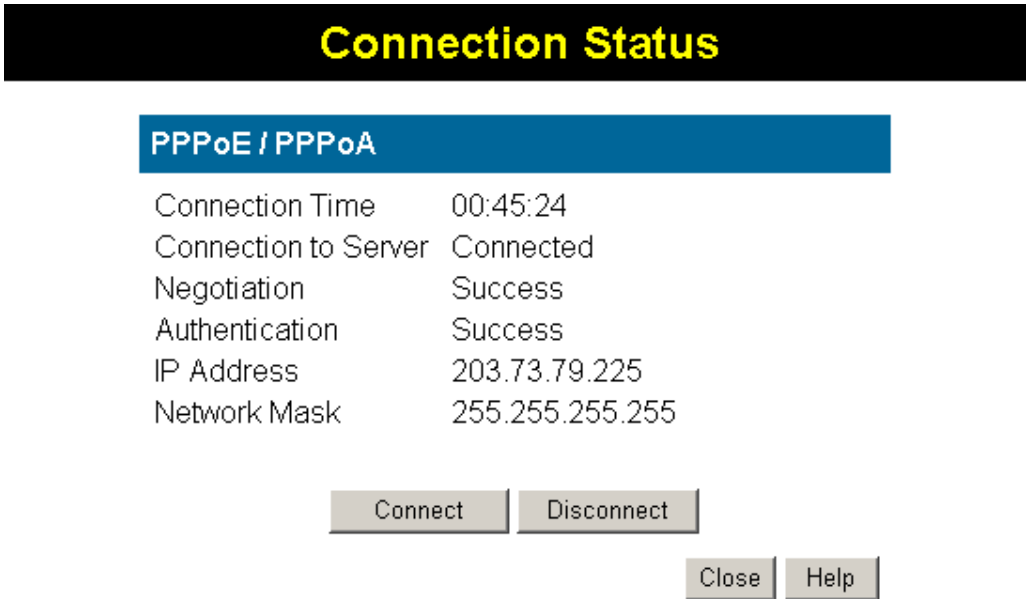


Figure 67: PPPoE Status Screen

Data - PPPoE/PPPoA Screen

Connection Time	This indicates how long the current connection has been established.
PPPoE Link Status	This indicates whether or not the connection is currently established. <ul style="list-style-type: none">• If the connection does not exist, the "Connect" button can be used to establish a connection.• If the connection currently exists, the "Disconnect" button can be used to break the connection.
Negotiation	This indicates the status of the PPPoE Server login.
IP Address	The IP Address of this device, as seen by Internet users. This address is allocated by your ISP (Internet Service Provider).
Network Mask	The Network Mask associated with the IP Address above.
Buttons	
Connect	If not connected, establish a connection to your ISP.
Disconnect	If connected to your ISP, hang up the connection.
Close	Close this window.

Connection Details - Dynamic IP Address

If your access method is "Direct" (no login), with a Dynamic IP address, a screen like the following example will be displayed when the "Connection Details" button is clicked.

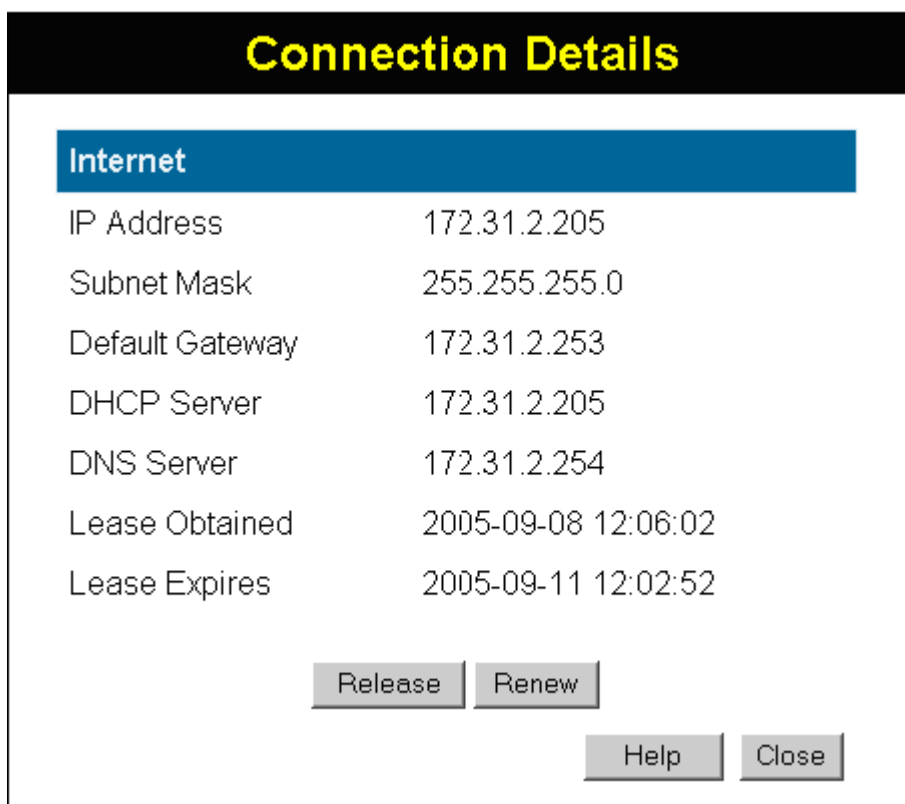


Figure 68: Connection Details - Fixed/Dynamic IP Address

Data - Dynamic IP address

Internet	
IP Address	The current IP Address of this device, as seen by Internet users. This address is allocated by your ISP (Internet Service Provider).
Network Mask	The Network Mask associated with the IP Address above.
Default Gateway	The IP address of the remote Gateway or Router associated with the IP Address above.
DHCP Server	The IP address of your ISP's DHCP Server.
DNS Server	The IP address of the Domain Name Server which is currently used.
Lease Obtained Lease Expires	This indicates when the current IP address was obtained, and how long before this IP address allocation (the DHCP lease) expires.
Buttons	
Release	If an IP Address has been allocated to the IAD-200 / IAD-200W (by the ISP's DHCP Server), clicking the "Release" button will break the connection and release the IP Address.
Renew	If the ISP's DHCP Server has NOT allocated an IP Address for the

	IAD-200 / IAD-200W, clicking the "Renew" button will attempt to re-establish the connection and obtain an IP Address from the ISP's DHCP Server.
Close	Close this window.

Connection Details - Fixed IP Address

If your access method is "Direct" (no login), with a fixed IP address, a screen like the following example will be displayed when the "Connection Details" button is clicked.

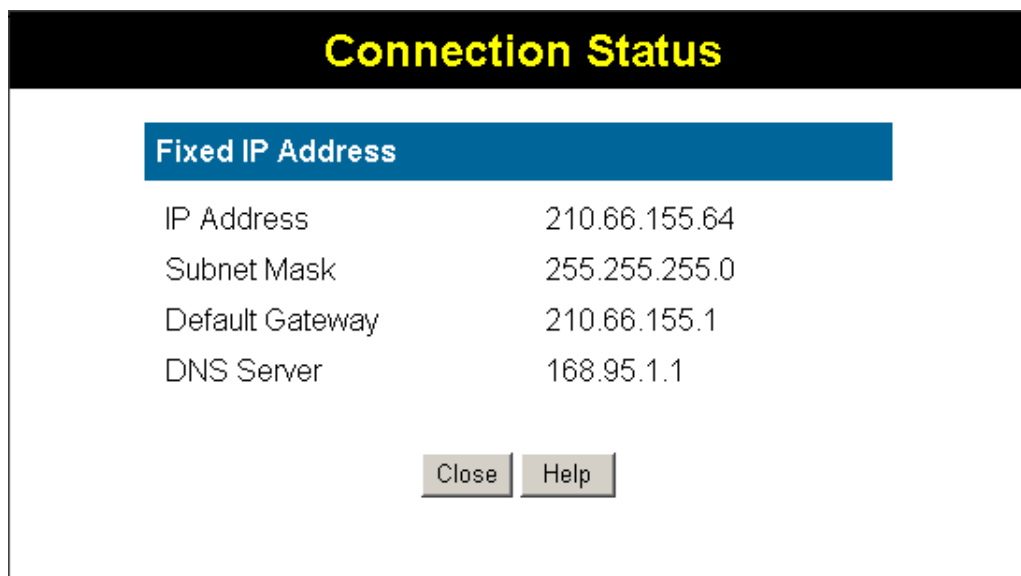


Figure 69: Connection Details - Fixed/Dynamic IP Address

Data - Fixed IP address Screen

Internet	
IP Address	The IP Address of this device, as seen by Internet users. This address is allocated by your ISP (Internet Service Provider).
Network Mask	The Network Mask associated with the IP Address above.
Default Gateway	The IP Address of the remote Gateway or Router associated with the IP Address above.
DNS Server	The IP Address of the Domain Name Server which is currently used.

Using VoIP

VoIP cannot be used until configuration has been completed. See the **VoIP** topic in *Chapter 5 - Advanced Features* for details of VoIP configuration.

Normal Operation

- Your Internet connection should be configured to keep the Internet connection active as much as possible (Keep Alive).
- Once logged in to the SIP server, you can dial any number using the procedure specified by your VoIP Service provider.
- You can dial any number via the PSTN (provided the PSTN line is connected) by first dialing the **PSTN Prefix** specified on the PSTN screen.

Note: Do not wait for a 2nd dial tone for the PSTN; there is no 2nd dial tone. Just dial the PSTN prefix and the desired telephone number.

- If there is no Internet connection, you can still use the phone provided the PSTN setting *Use PSTN for all calls if VoIP is unavailable* is **Enabled**. (This setting is on the PSTN screen.) In this case, the call will go via PSTN and you will be charged accordingly by your telephone company.
- If there is no power, you can still use the phone provided the PSTN line is connected. In this case, the call will go via PSTN and you will be charged accordingly by your telephone company.

Advanced Call Features

The IAD-200 / IAD-200W supports Call Waiting and 3-Way Conference calls.

Note: The instruction below refer to the "flash hook" button. This may be labeled "Recall" on your phone. If you phone does not have a "flash hook" button, you can instead briefly press the button or pad used to hang up the phone.

Call Waiting

Call waiting alerts you to another incoming call when you are already having a telephone conversation, and allows you to answer the incoming call:

- Your phone will ring.
- Press "flash hook" to answer the incoming call. The other caller will be placed on hold.
- Press "flash hook" to swap between the two calls.

If you hang up when finished speaking to one caller, your phone will ring if the other caller is still on-line.

Note: You can disable the Call Waiting feature by dialing *70

You will hear the dial tone and can dial the required number. This ensures the call will not be interrupted by an incoming call.

3-Way Conference Calls

This feature allows you to speak to 2 other people simultaneously. To use this feature:

- Establish the first call.
- Press "flash hook"
- Dial the 2nd person

Appendix A

Troubleshooting



This Appendix covers the most likely problems and their solutions.

Overview

This section covers some common problems that may be encountered while using the IAD-200 / IAD-200W and some possible solutions to them. If you follow the suggested steps and the IAD-200 / IAD-200W still does not function properly, contact your dealer for further advice.

General Problems

Problem 1: Can't connect to the IAD-200 / IAD-200W to configure it.

Solution 1: Check the following:

- The IAD-200 / IAD-200W is properly installed, LAN connections are OK, and it is powered ON.
- Ensure that your PC and the IAD-200 / IAD-200W are on the same network segment. (If you don't have a router, this must be the case.)
- If your PC is set to "Obtain an IP Address automatically" (DHCP client), restart it.
- If your PC uses a Fixed (Static) IP address, ensure that it is using an IP Address within the range 192.168.0.2 to 192.168.0.254 and thus compatible with the IAD-200 / IAD-200W's default IP Address of 192.168.0.1.

Also, the Network Mask should be set to 255.255.255.0 to match the IAD-200 / IAD-200W.

In Windows, you can check these settings by using *Control Panel-Network* to check the *Properties* for the TCP/IP protocol.

Internet Access

Problem 1: When I enter a URL or IP address I get a time out error.

Solution 1: A number of things could be causing this. Try the following troubleshooting steps.

- Check if other PCs work. If they do, ensure that your PCs IP settings are correct. If using a Fixed (Static) IP Address, check the Network Mask, Default gateway and DNS as well as the IP Address.
- If the PCs are configured correctly, but still not working, check the IAD-200 / IAD-200W. Ensure that it is connected and ON. Connect to it and check its settings. (If you can't connect to it, check the LAN and power connections.)
- Check the IAD-200 / IAD-200W's status screen to see if it is working correctly.

Problem 2: Some applications do not run properly when using the IAD-200 / IAD-200W.

Solution 2: The IAD-200 / IAD-200W processes the data passing through it, so it is not transparent.

For incoming connections, you must use the Virtual Server or Firewall Rules to specify the PC which will receive the incoming traffic.

You can also use the *DMZ* function. This should work with almost every application, but:

- It is a security risk, since the firewall is disabled.
- Only one (1) PC can use this feature.

Wireless Access (IAD-200W only)

Problem 1: My PC can't locate the Wireless Access Point.

Solution 1: Check the following.

- Your PC is set to *Infrastructure Mode*. (Access Points are always in *Infrastructure Mode*)
- The SSID on your PC and the Wireless Access Point are the same. Remember that the SSID is case-sensitive. So, for example "Workgroup" does NOT match "workgroup".
- Both your PC and the IAD-200W must have the same setting for WEP. The default setting for the IAD-200W is disabled, so your wireless station should also have WEP disabled.
- If WEP is enabled on the IAD-200W, your PC must have WEP enabled, and the key must match.
- If the IAD-200W's *Wireless* screen is set to *Allow Trusted PCs only*, then each of your Wireless stations must have been designated as "Trusted", or the Wireless station will be blocked.
- To see if radio interference is causing a problem, see if connection is possible when close to the IAD-200W. Remember that the connection range can be as little as 100 feet in poor environments.

Problem 2: Wireless connection speed is very slow.

Solution 2: The wireless system will connect at the highest possible speed, depending on the distance and the environment. To obtain the highest possible connection speed, you can experiment with the following:

- IAD-200W location.
Try adjusting the location and orientation of the IAD-200W.
- Wireless Channel
If interference is the problem, changing to another channel may show a marked improvement.
- Radio Interference
Other devices may be causing interference. You can experiment by switching other devices Off, and see if this helps. Any "noisy" devices should be shielded or relocated.
- RF Shielding
Your environment may tend to block transmission between the wireless

stations. This will mean high access speed is only possible when close to the IAD-200W.

Appendix B

About Wireless LANs (IAD-200W only)



This Appendix provides some background information about using Wireless LANs (IAD-200W only).

Modes

Wireless LANs can work in either of two (2) modes:

- Ad-hoc
- Infrastructure

Ad-hoc Mode

Ad-hoc mode does not require an Access Point or a wired (Ethernet) LAN. Wireless Stations (e.g. notebook PCs with wireless cards) communicate directly with each other.

Infrastructure Mode

In Infrastructure Mode, one or more Access Points are used to connect Wireless Stations (e.g. Notebook PCs with wireless cards) to a wired (Ethernet) LAN. The Wireless Stations can then access all LAN resources.



Access Points can only function in "Infrastructure" mode, and can communicate only with Wireless Stations which are set to "Infrastructure" mode.

BSS/ESS

BSS

A group of Wireless Stations and a single Access Point, all using the same ID (SSID), form a Basic Service Set (BSS).

Using the same SSID is essential. Devices with different SSIDs are unable to communicate with each other.

ESS

A group of Wireless Stations, and multiple Access Points, all using the same ID (ESSID), form an Extended Service Set (ESS).

Different Access Points within an ESS can use different Channels. In fact, to reduce interference, it is recommended that adjacent Access Points **SHOULD** use different channels.

As Wireless Stations are physically moved through the area covered by an ESS, they will automatically change to the Access Point which has the least interference or best performance. This capability is called **Roaming**. (Access Points do not have or require Roaming capabilities.)

Channels

The Wireless Channel sets the radio frequency used for communication.

- Access Points use a fixed Channel. You can select the Channel used. This allows you to choose a Channel which provides the least interference and best performance. In the USA and Canada, 11 channels are available. If using multiple Access Points, it is better if adjacent Access Points use different Channels to reduce interference.
- In "Infrastructure" mode, Wireless Stations normally scan all Channels, looking for an Access Point. If more than one Access Point can be used, the one with the strongest signal is used. (This can only happen within an ESS.)
- If using "Ad-hoc" mode (no Access Point), all Wireless stations should be set to use the same Channel. However, most Wireless stations will still scan all Channels to see if there is an existing "Ad-hoc" group they can join.

WEP

WEP (Wired Equivalent Privacy) is a standard for encrypting data before it is transmitted.

This is desirable because it is impossible to prevent snoopers from receiving any data which is transmitted by your Wireless Stations. But if the data is encrypted, then it is meaningless unless the receiver can decrypt it.

If WEP is used, the Wireless Stations and the Access Point must have the same settings for each of the following:

WEP	Off, 64 Bit, 128 Bit
Key	For 64 Bit encryption, the Key value must match. For 128 Bit encryption, the Key value must match
WEP Authentication	Open System or Shared Key.

WPA-PSK

WPA-PSK is another standard for encrypting data before it is transmitted. This is a later standard than WEP (Wired Equivalent Privacy), and provides greater security for your data. Data is encrypted using a 256Bit key which is automatically generated and changed often.

If all your Wireless stations support WPA-PSK, you should use this instead of WEP.

If WPA-PSK is used, the Wireless Stations and the Access Point must have the same settings for each of the following:

WPA PSK (Pre-shared Key)	Enter the same value on every station and the AP. The PSK must be from 8 to 63 characters in length. The 256Bit key used for the actual encryption is derived from this key.
Encryption	The same encryption method must be used. The most common encryption method is TKIP. Another widely-supported method is AES.

Wireless LAN Configuration

To allow Wireless Stations to use the Access Point, the Wireless Stations and the Access Point must use the same settings, as follows:

Mode	On client Wireless Stations, the mode must be set to "Infrastructure". (The Access Point is always in "Infrastructure" mode.)
SSID (ESSID)	Wireless Stations should use the same SSID (ESSID) as the Access Point they wish to connect to. Alternatively, the SSID can be set to "any" or null (blank) to allow connection to any Access Point.
Wireless Security	<p>The Wireless Stations and the Access Point must use the same settings for Wireless security. (None, WEP, WPA-PSK).</p> <p>WEP: If WEP is used, the Key size (64Bit, 128Bit), Key value, and Authentication settings must be the same on the Wireless Stations and the Access Point.</p> <p>WPA-PSK: If WPA-PSK is used, all Wireless Stations must be set to use WPA-PSK, and have the same Pre-shared Key and encryption system.</p> <p>For Ad-hoc networks (no Access Point), all Wireless stations must use the same security settings.</p>

